

ZJELL INDIA

BOOK NOW



INFORMATION

+919315242072
www.zjellhomes.com
615, Floor 6 Galleria Tower,
DLF Phase 4 Gurugram,
Haryana - 1220025

info@wedge-india.com



Wedge

**“Smart, stylish, and
serene spaces —
made just for you.”**



In this catalogue, we present thoughtfully crafted designs by ZJELL HOMES, reflecting professional, innovative, and modern living styles. We are confident that you will appreciate the quality, aesthetics, and comfort of our ready-made homes — manufactured using advanced, fully bolted (no welding) systems in our state-of-the-art production facilities.

T A B L E O F C O N T E N T S

Ecopod	05
SnapHome	07
TranquilIN	09
FabHaus	11
Nova	13
Nesto	15
Bolt	17
Dwell	19
Evor	21
Astro	23
Verto	25
Zenco	27
Ecoira	29
TerraPod	31
LumoNest	33
Aurora	35
EliteDwell	37
CozyCube	39
LiveEase	41
BlissDwell	43
Hive	45
PrestigeHaus	47
Leafara	49
Neo	51
Soluvo	53
Aurum	55
Aurivio	57
Celeste	59
Elara	61
NeoHaus	63



ZJELL HOMES
DESIGN | BUILD | MAINTAIN

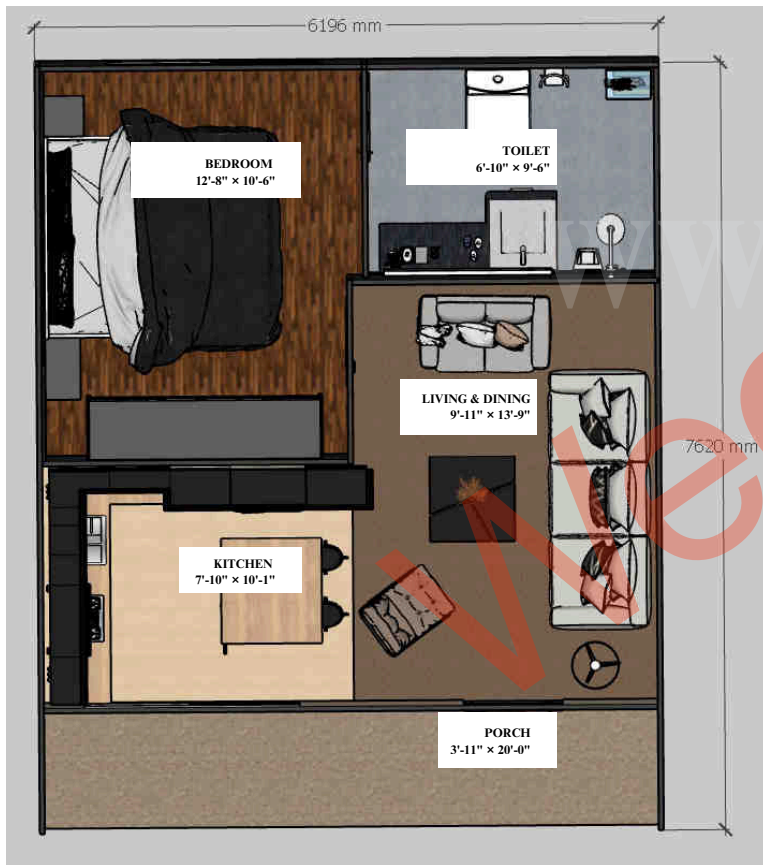
T A B L E O F C O N T E N T S

VertoNest	65
NexoNest	67
TekNest	69
Structo	71
Aurelia	73
SwiftHaus	75
FastFrame	77
EcoMod	79
HiveBox	81
SkyPod	83
Podora	85
GrandCasa	87
Liora	89
Elara	91
Homixa	93
Homora	95
Casario	97
OpalHaus	99
ZyraPod	101
Modulyn	103
Oryn	105
Prime	107
CargoCasa	109
Orbit	110
PodCity	112
Porta Box	114



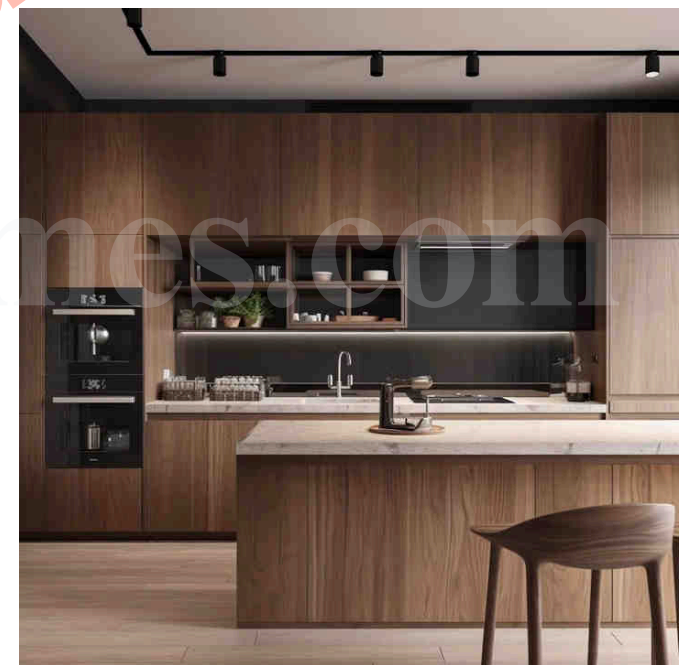
Single Storey House

Ecopod



G

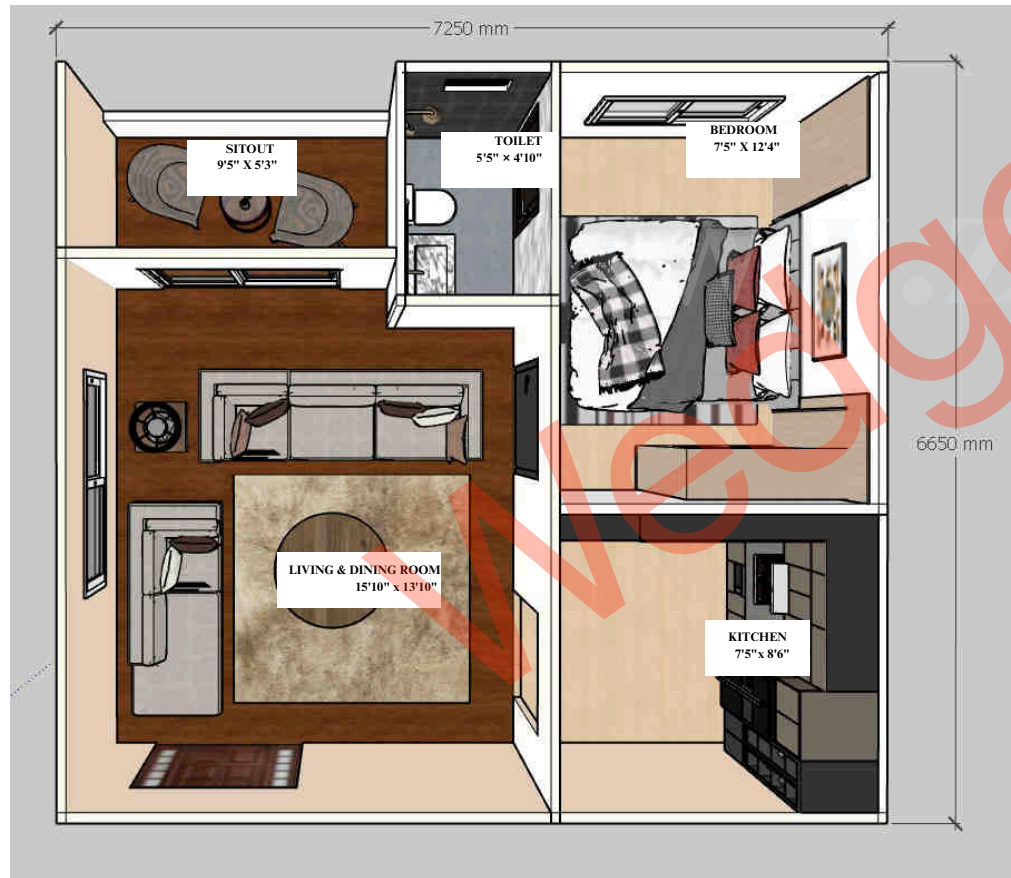
500 Sqft (1bhk)





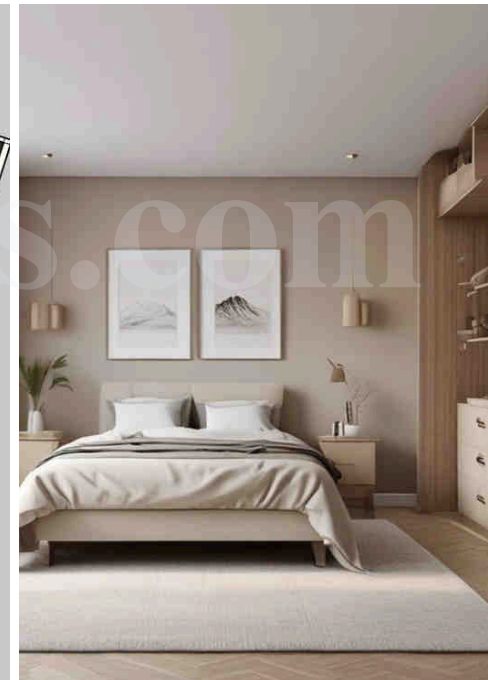
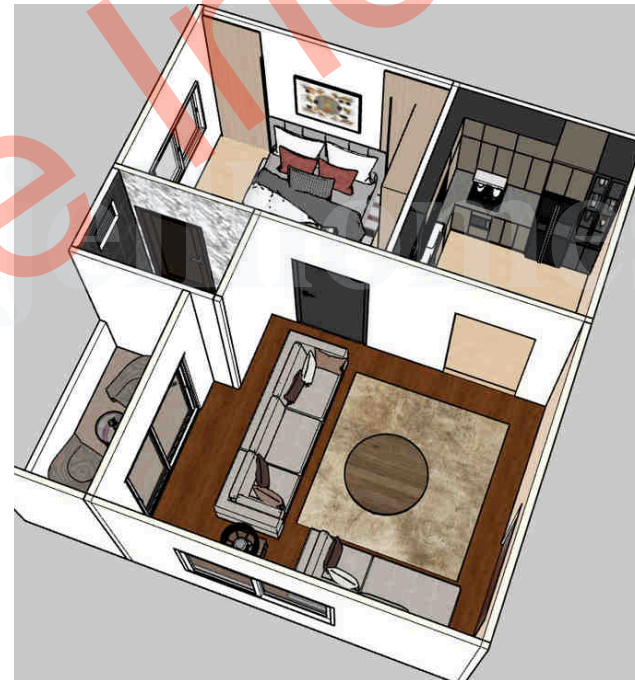
Single Storey House

SnapHome



G

500 Sqft (1bhk)



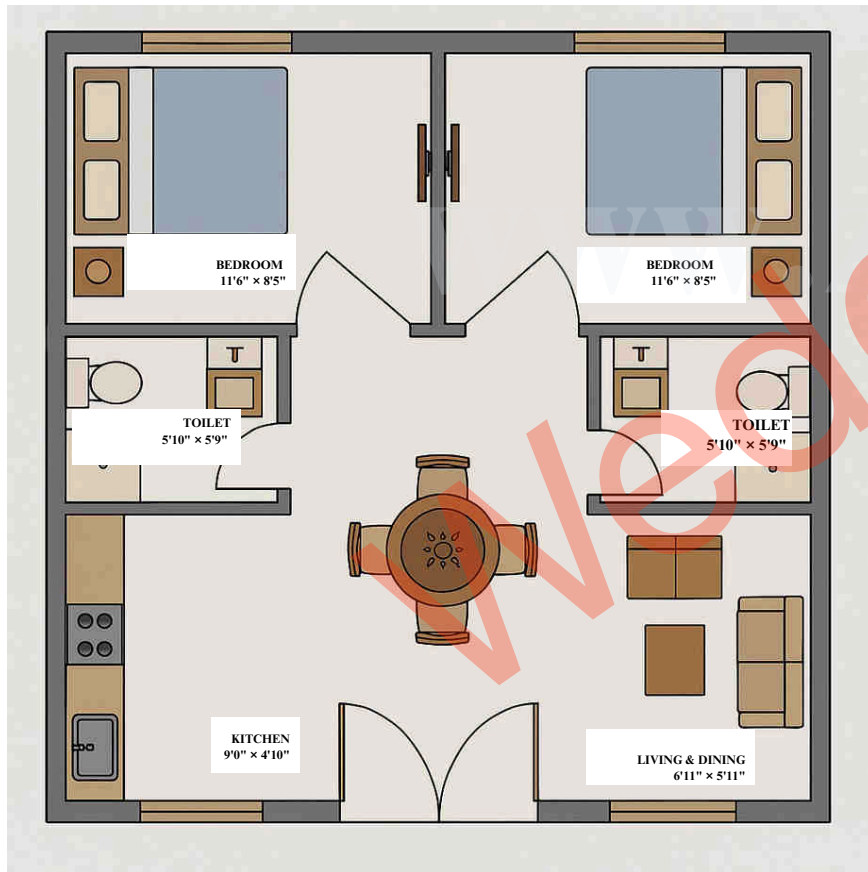


Single Storey House

TranquilIN

G

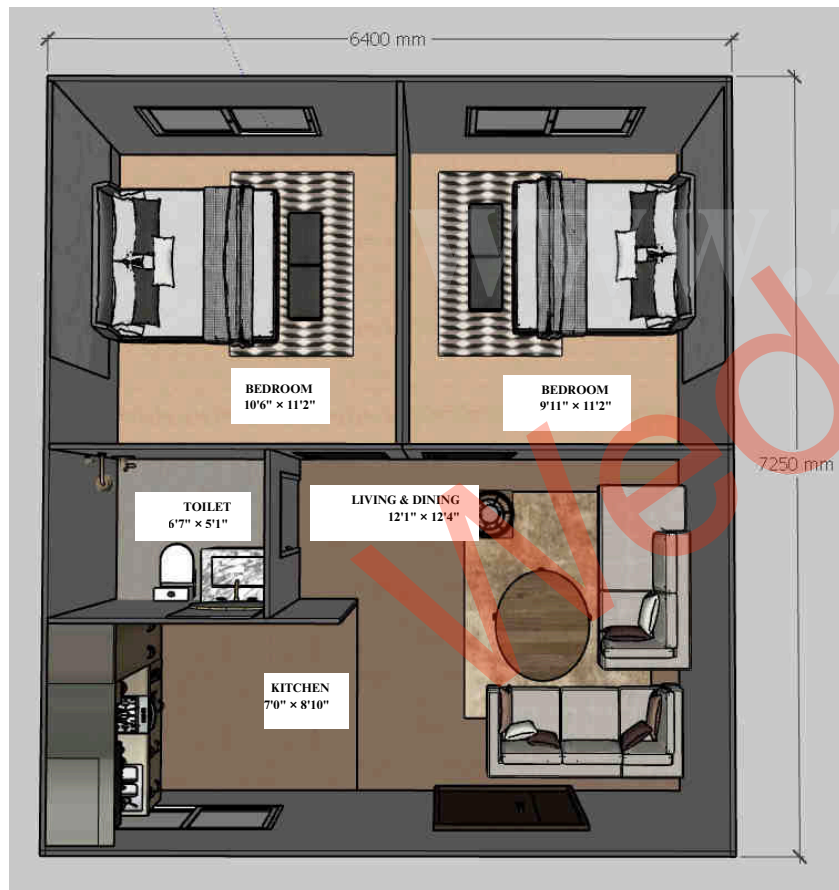
500 Sqft (2bhk)





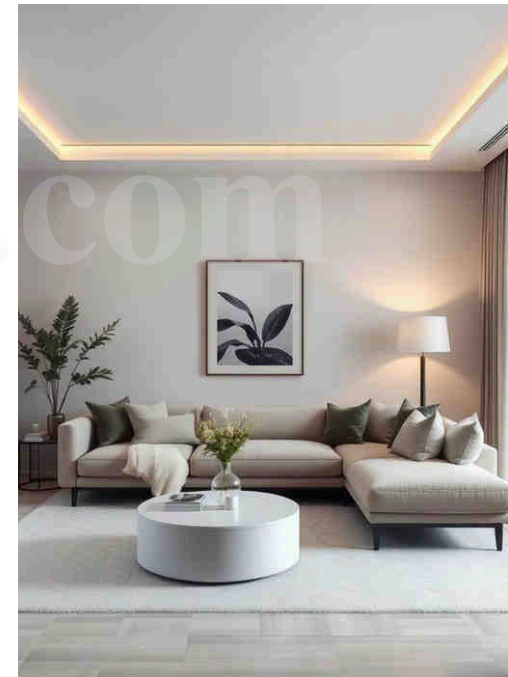
Single Storey House

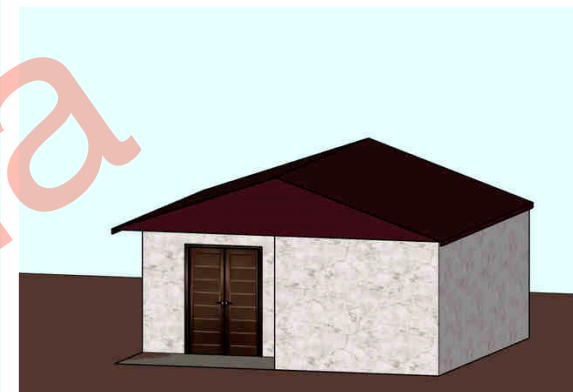
FabHaus



G

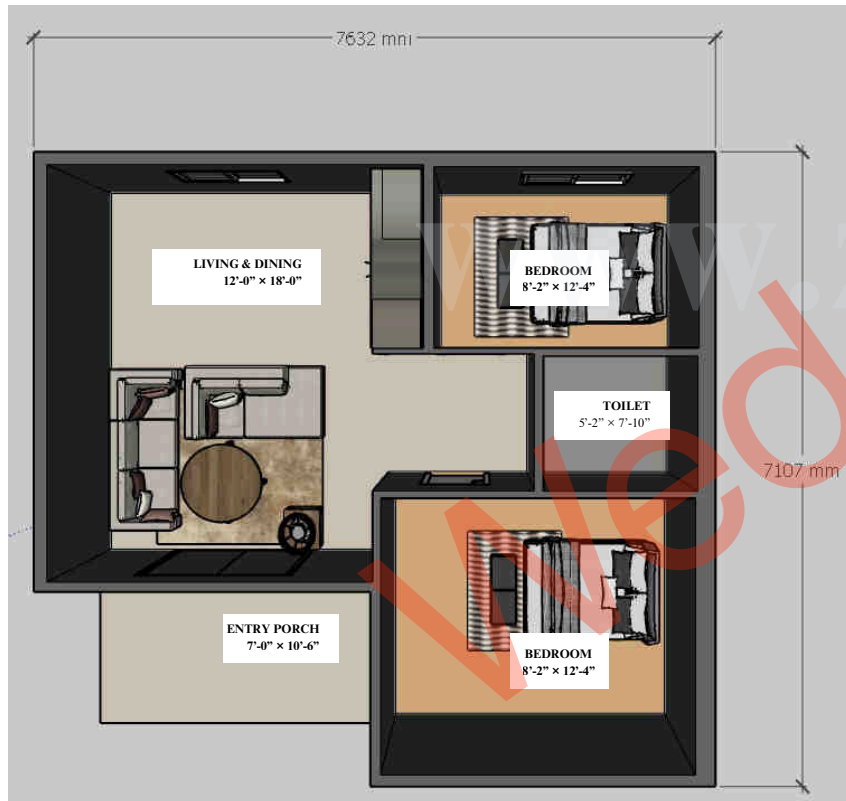
500 Sqft (2bhk)





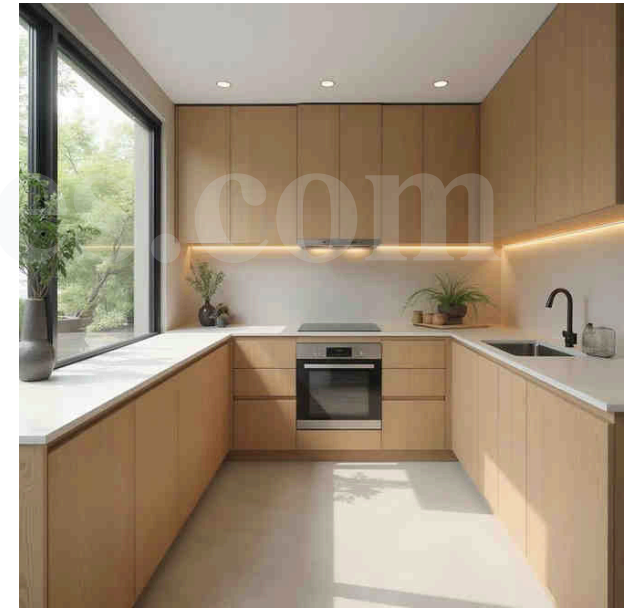
Single Storey House

Nova



G

548Sqft (2bhk)



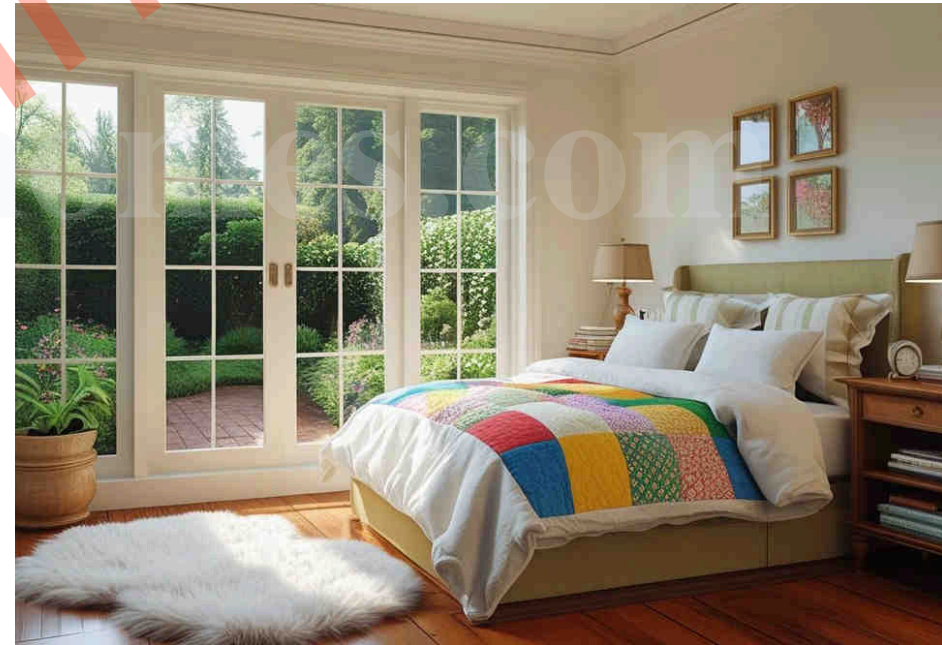
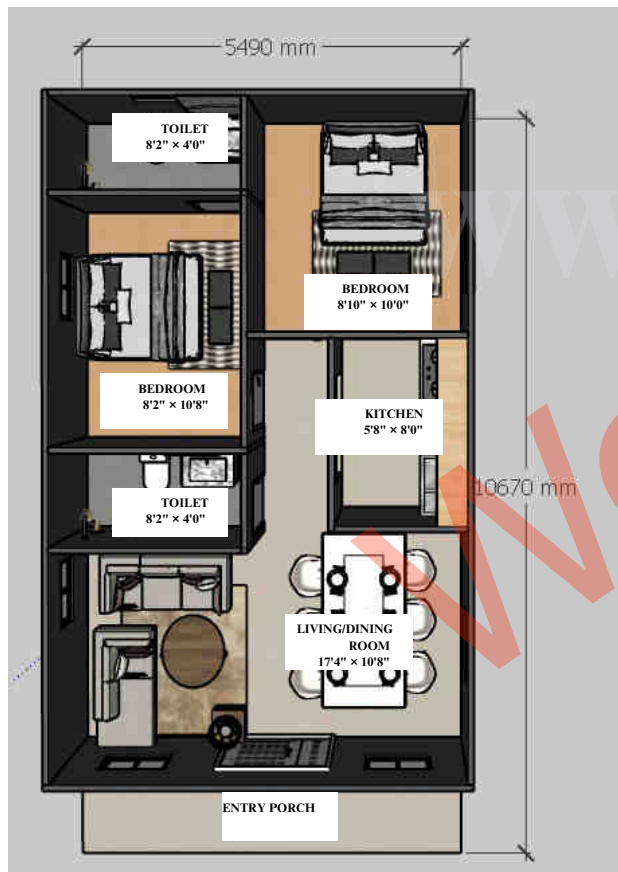


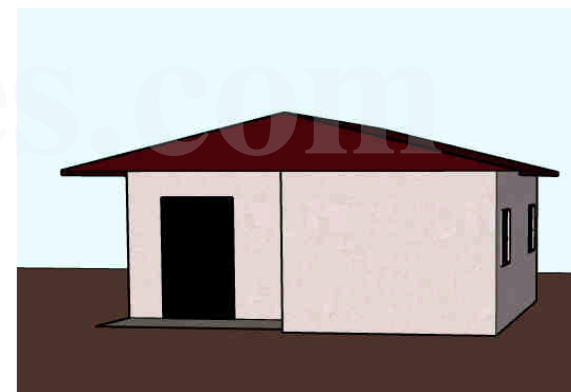
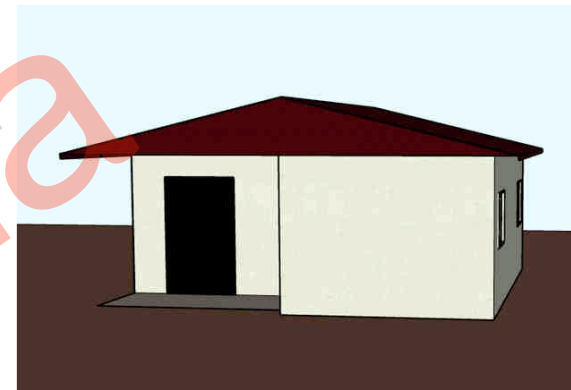
Single Storey House

Nesto

G

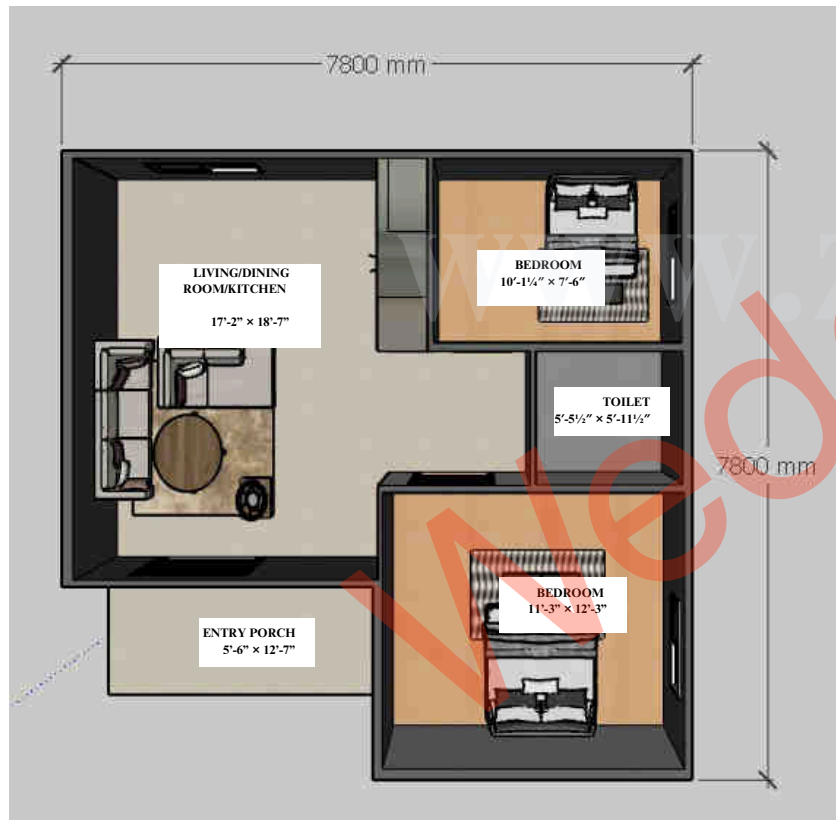
630Sqft (2bhk)





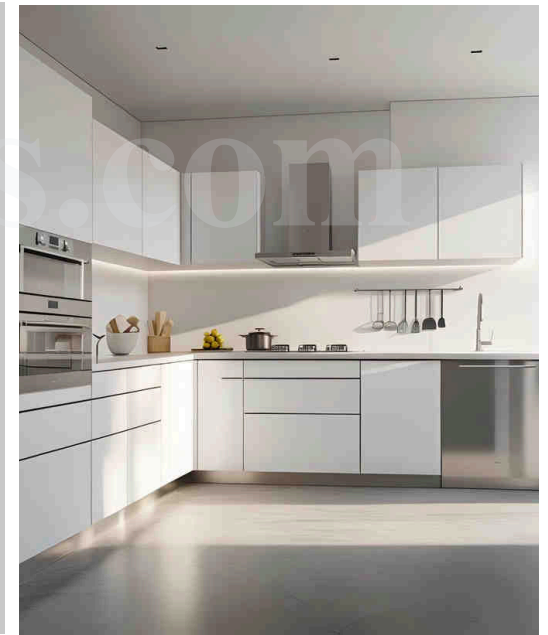
Single Storey House

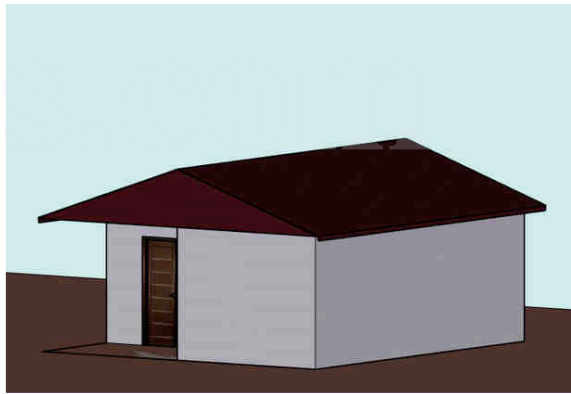
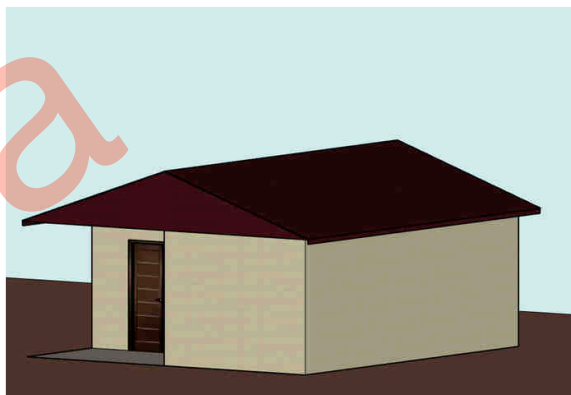
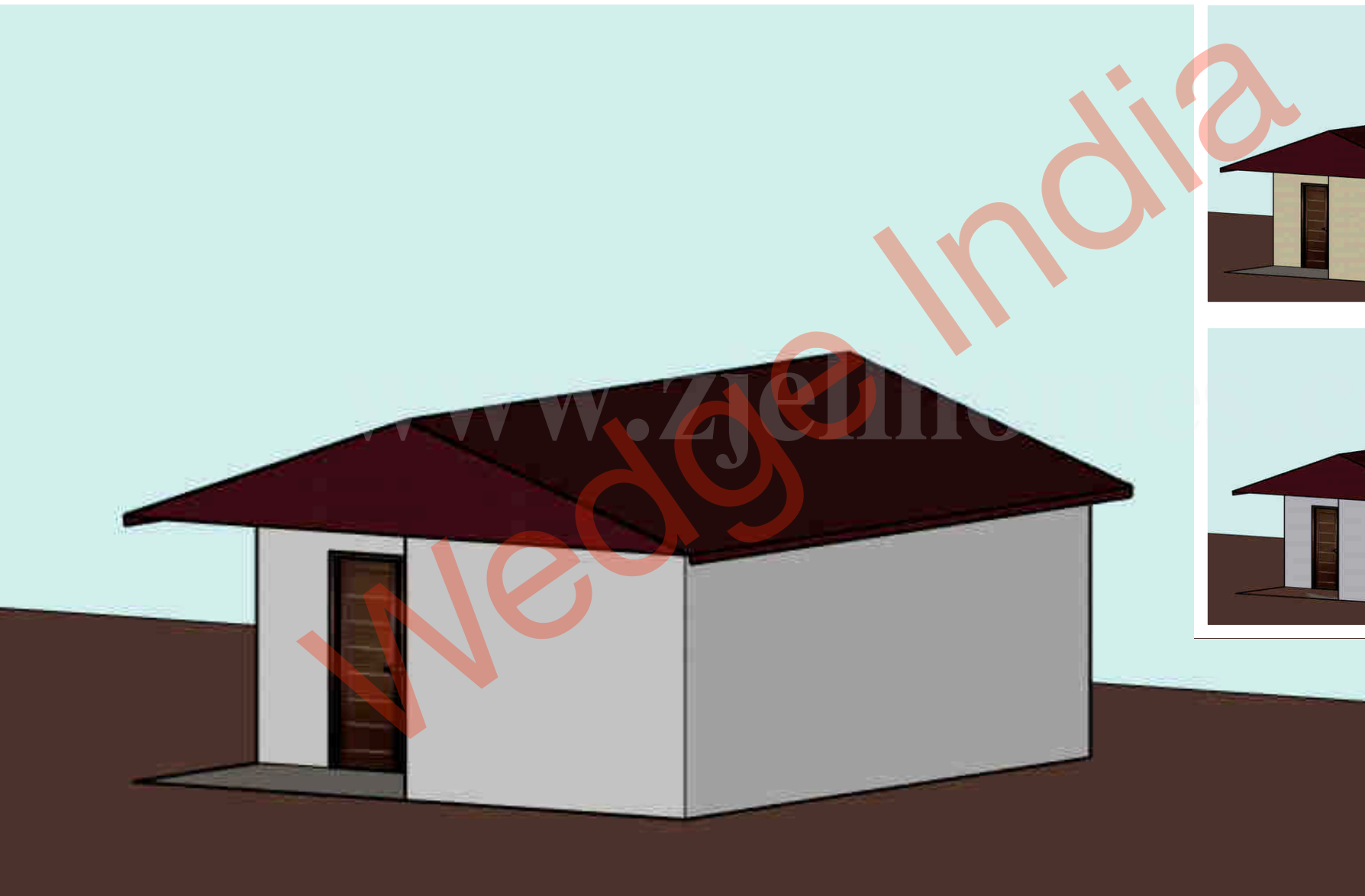
Bolt



G

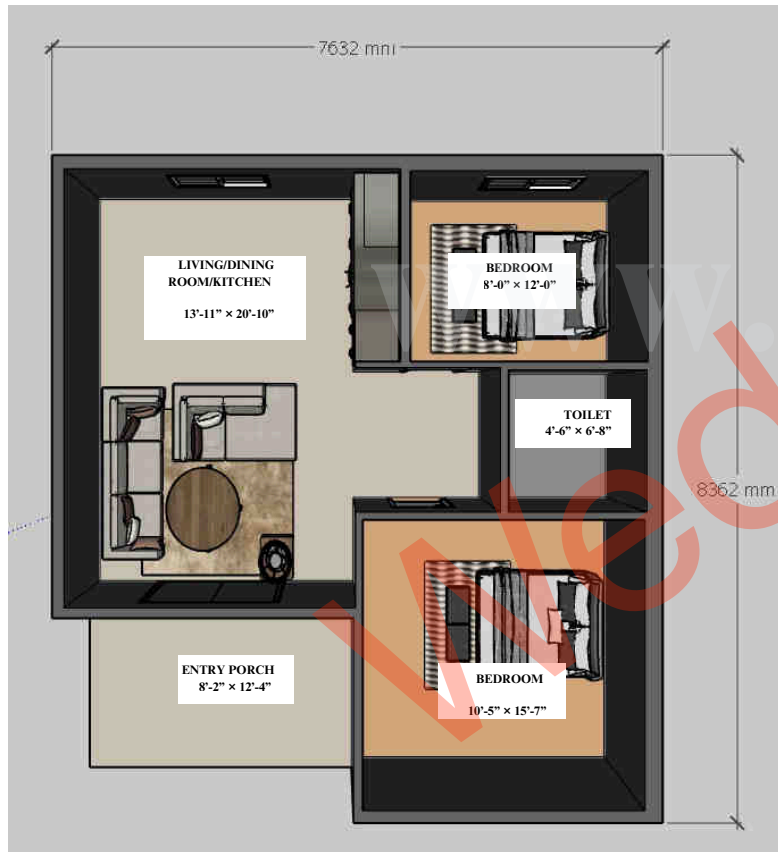
657Sqft (2bhk)





Single Storey House

Dwell



G

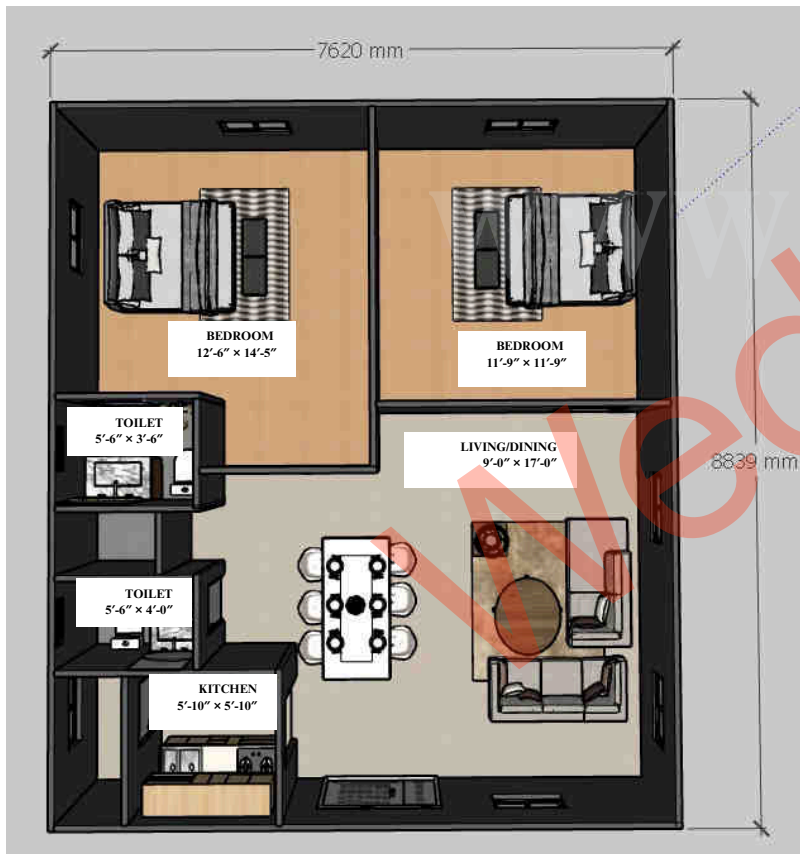
688Sqft (2bhk)





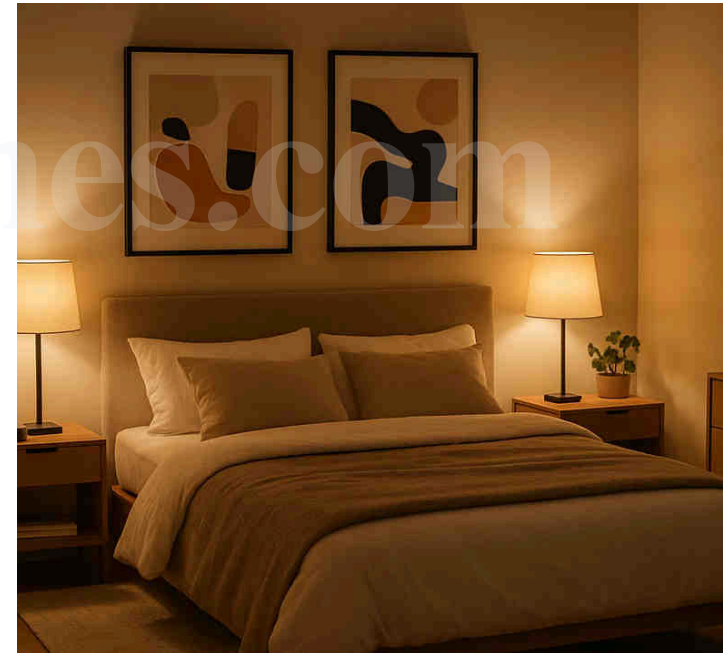
Single Storey House

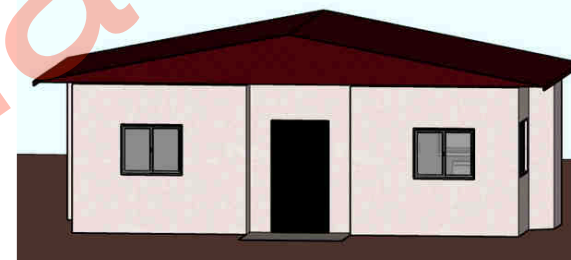
Evor



G

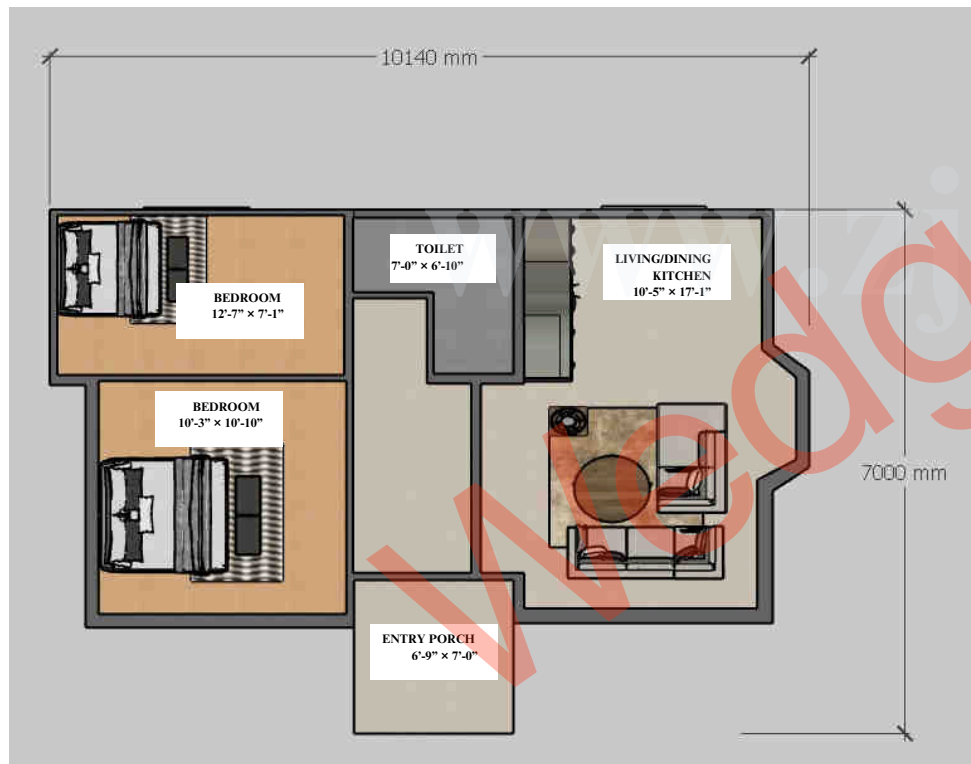
725Sqft (2bhk)





Single Storey House

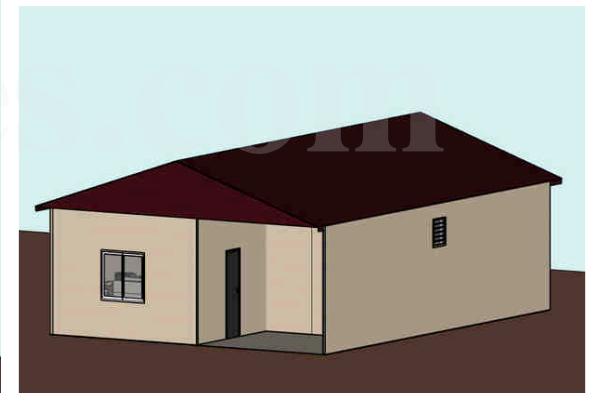
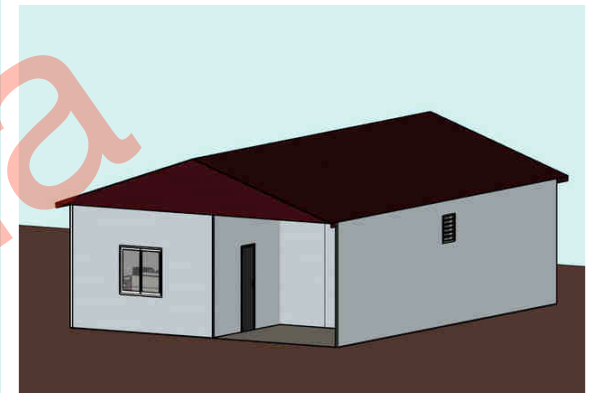
Astro



G

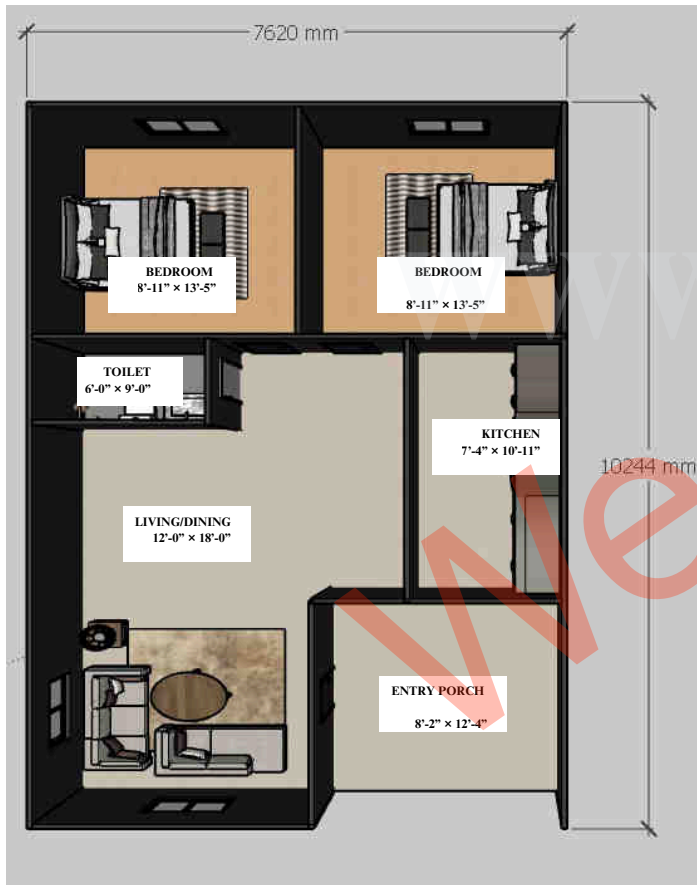
764Sqft (2bhk)





Single Storey House

Verto



G

788Sqft (2bhk)



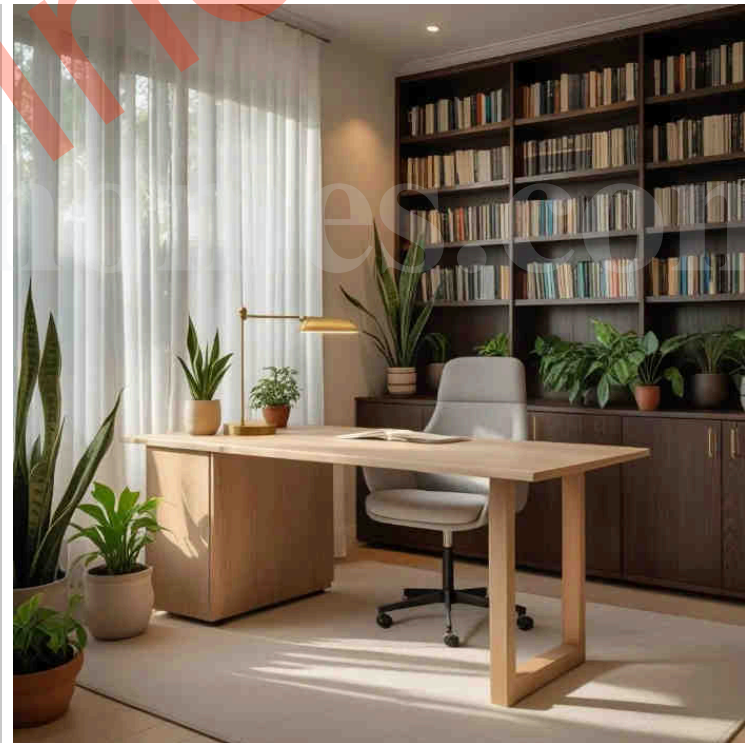
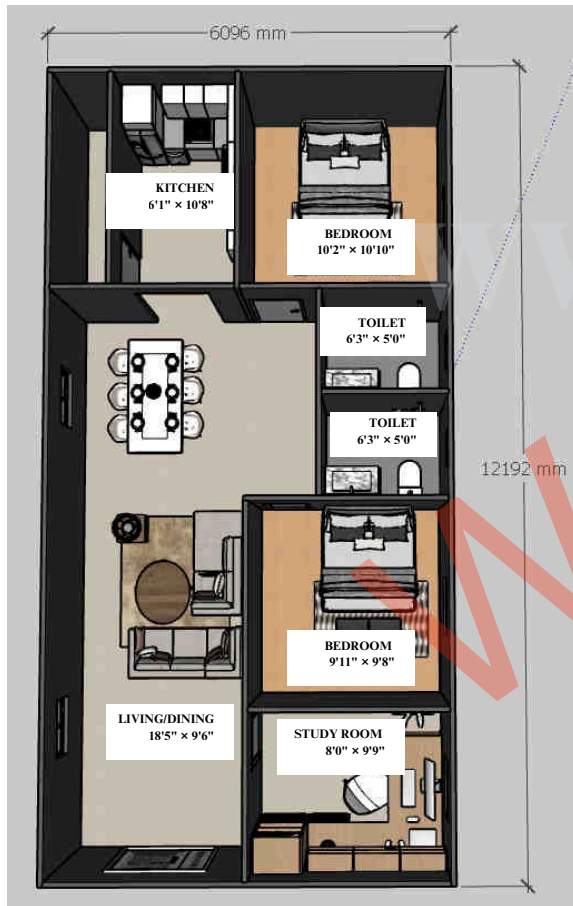


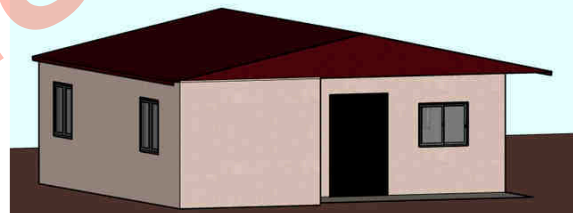
Single Storey House

Zenco

G

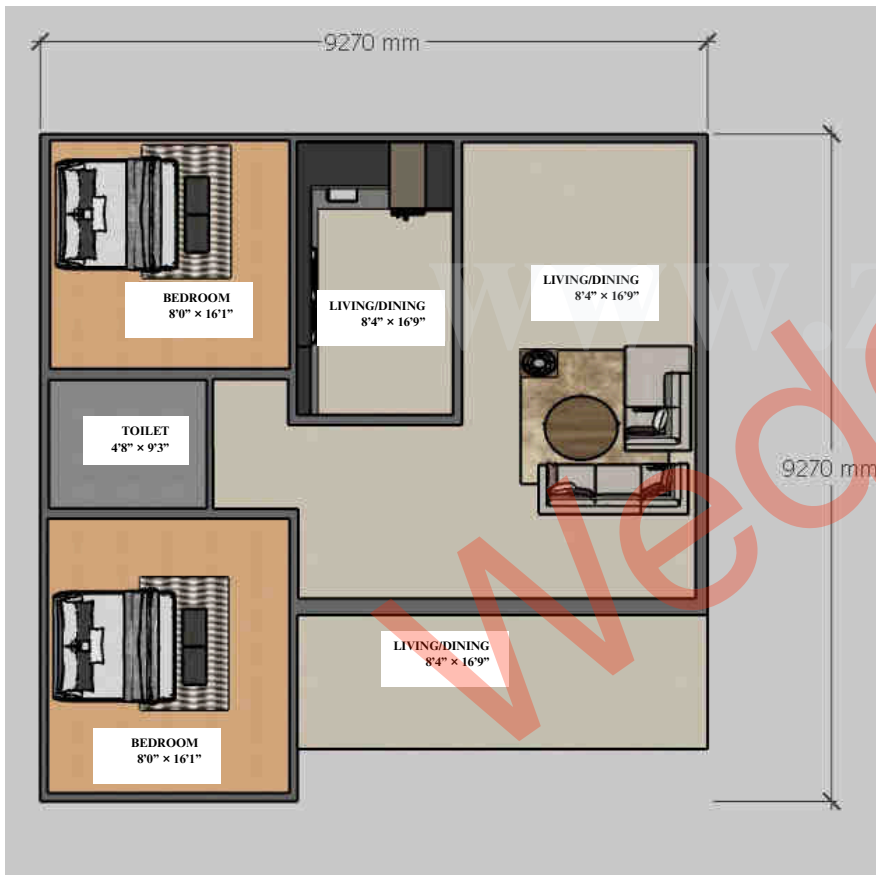
800Sqft (2bhk)





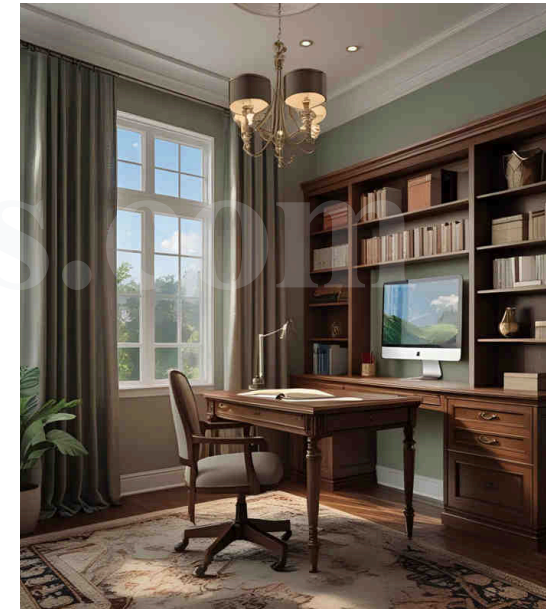
Single Storey House

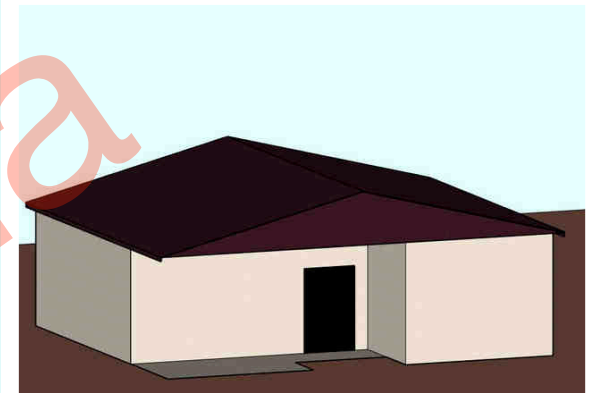
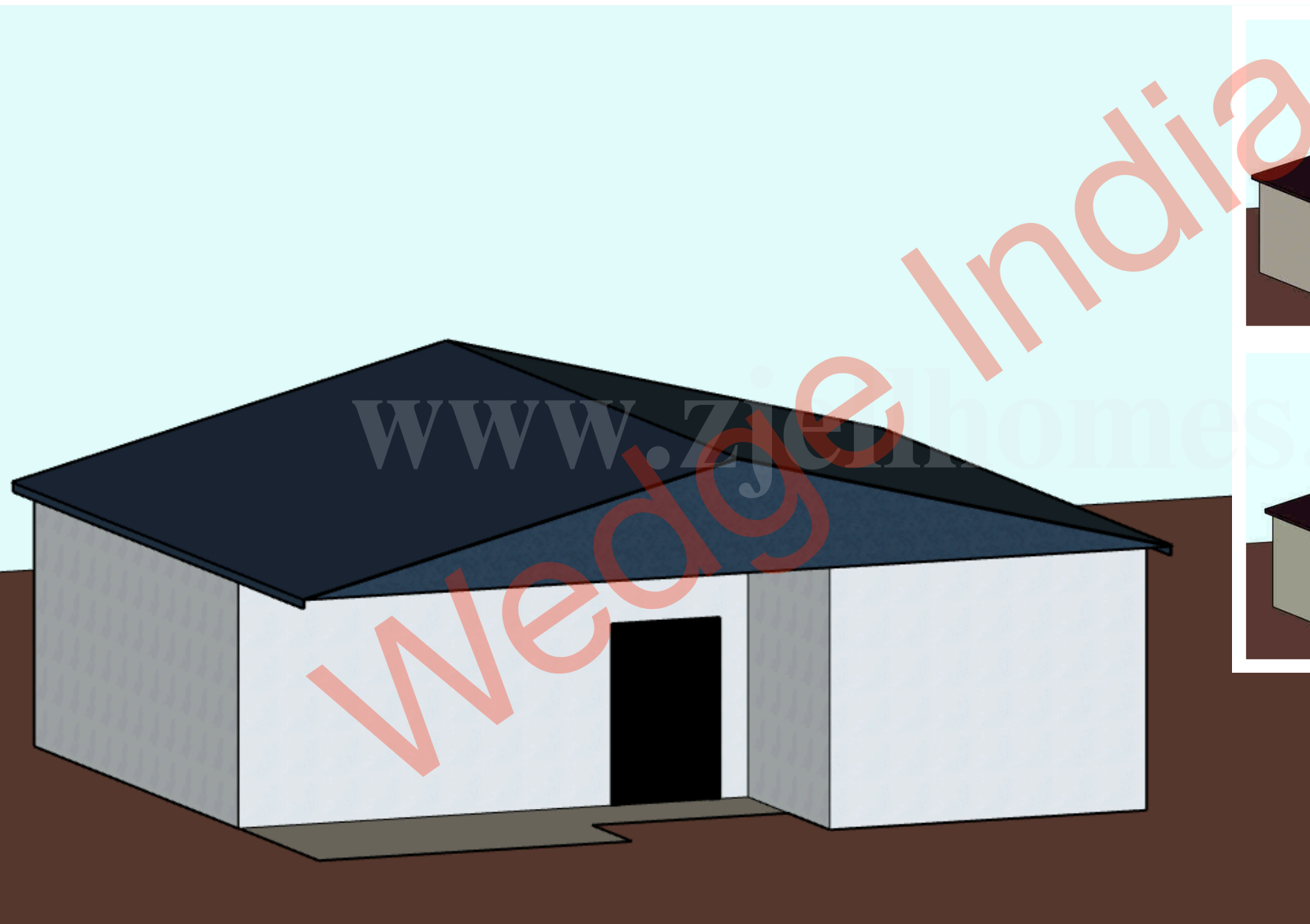
Ecoira



G

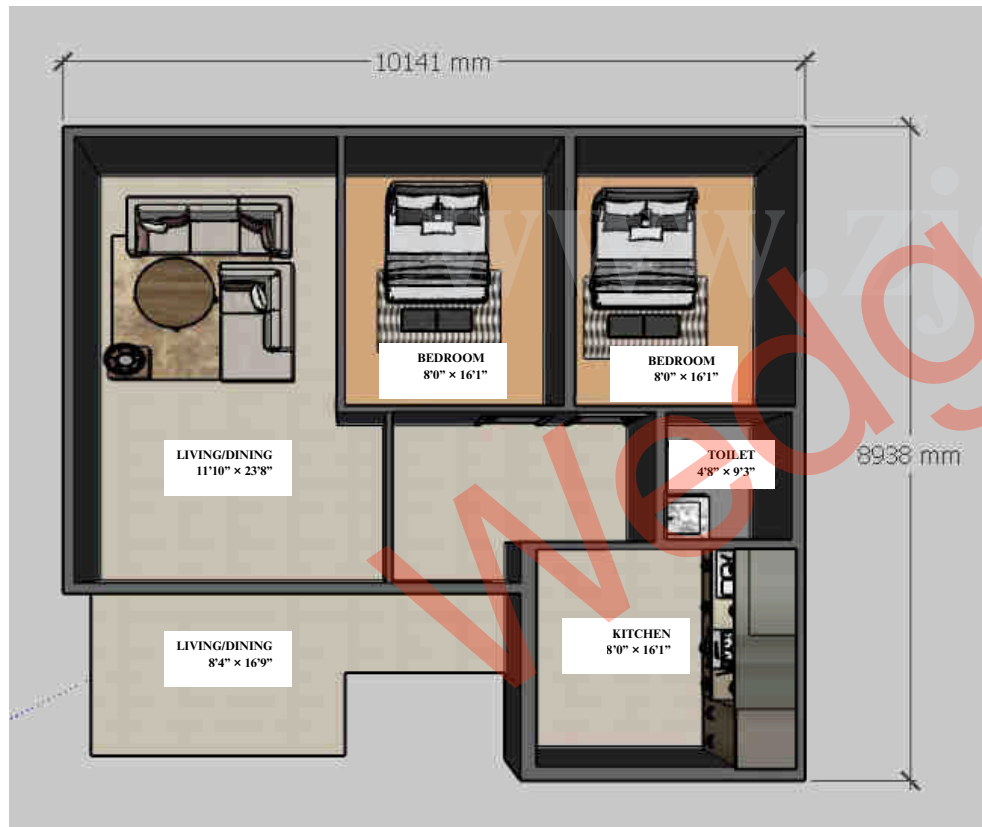
926sqft (2bhk)





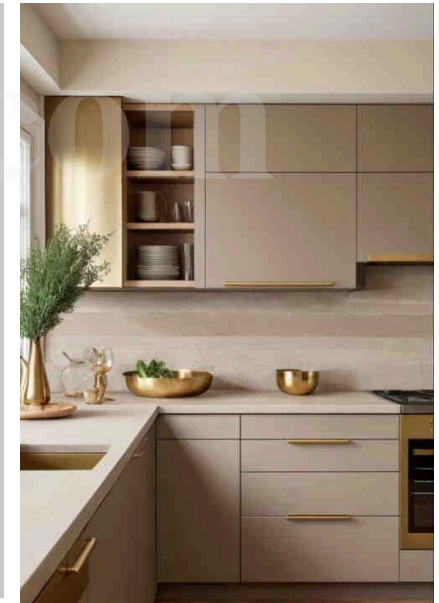
Single Storey House

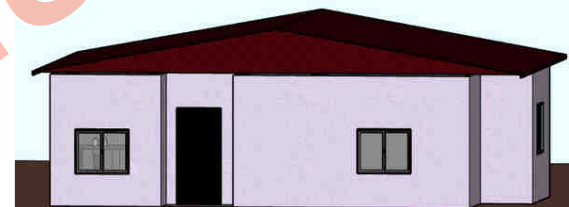
TerraPod



G

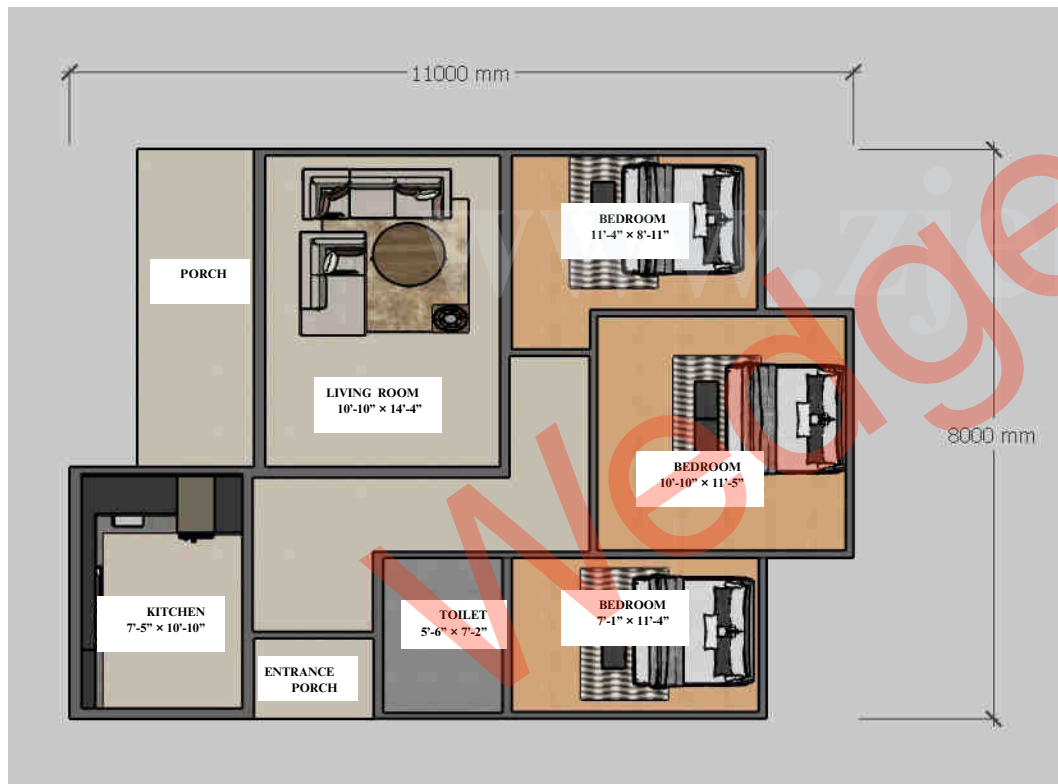
936sqft (2bhk)





Single Storey House

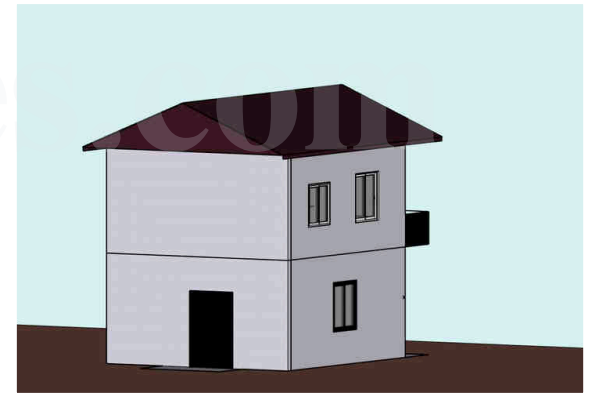
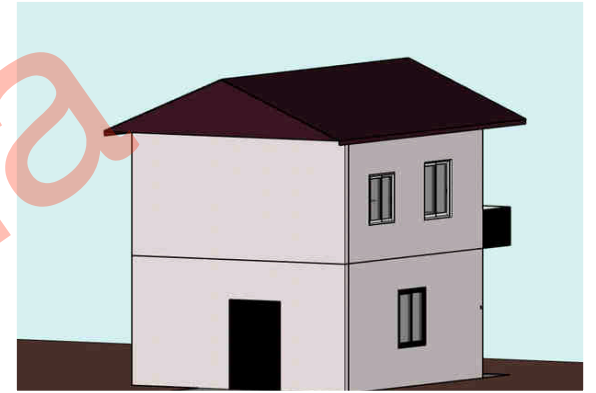
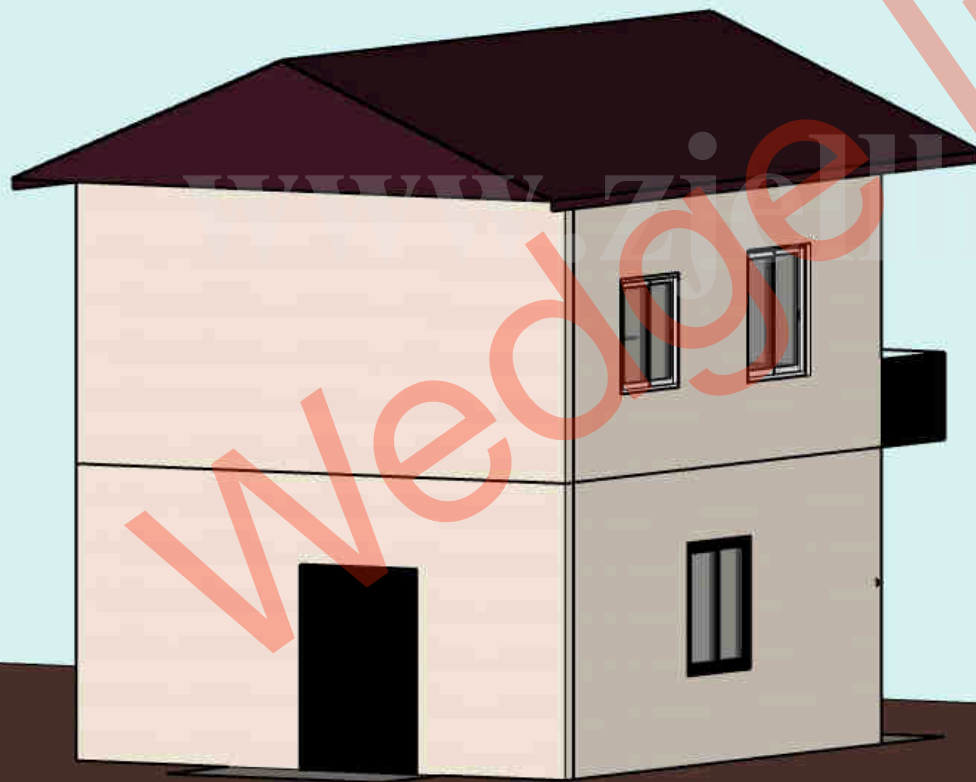
LumoNest



G

947sqft (3bhk)





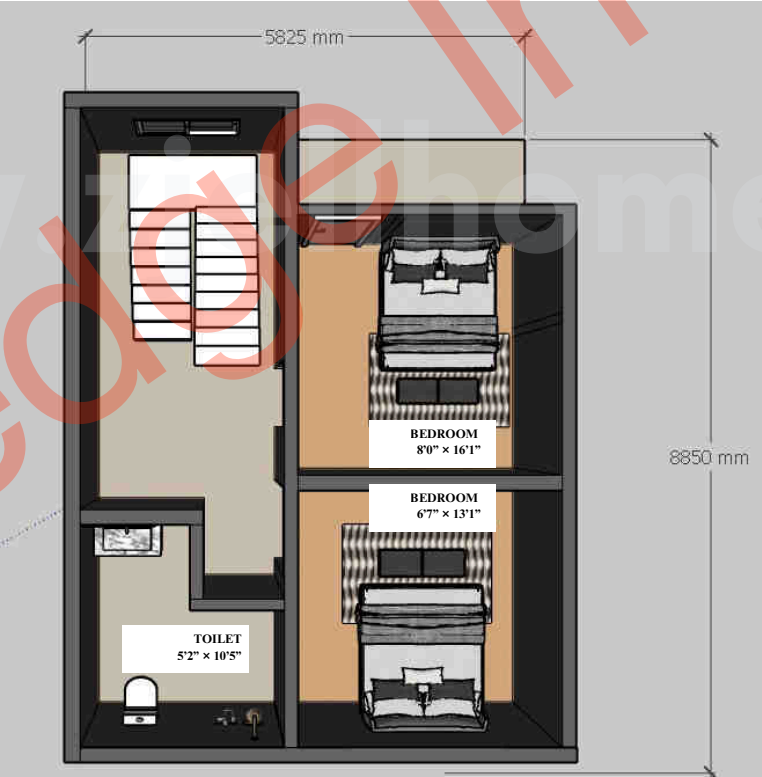
Double Storey House

Aurora

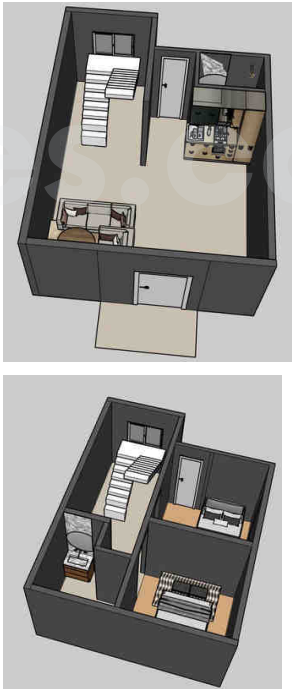
G+1 979 Sqft (2bhk)



Ground Floor Plan



Second Floor Plan



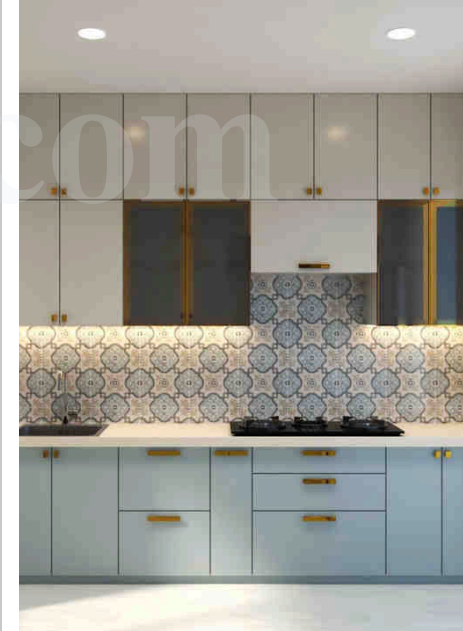
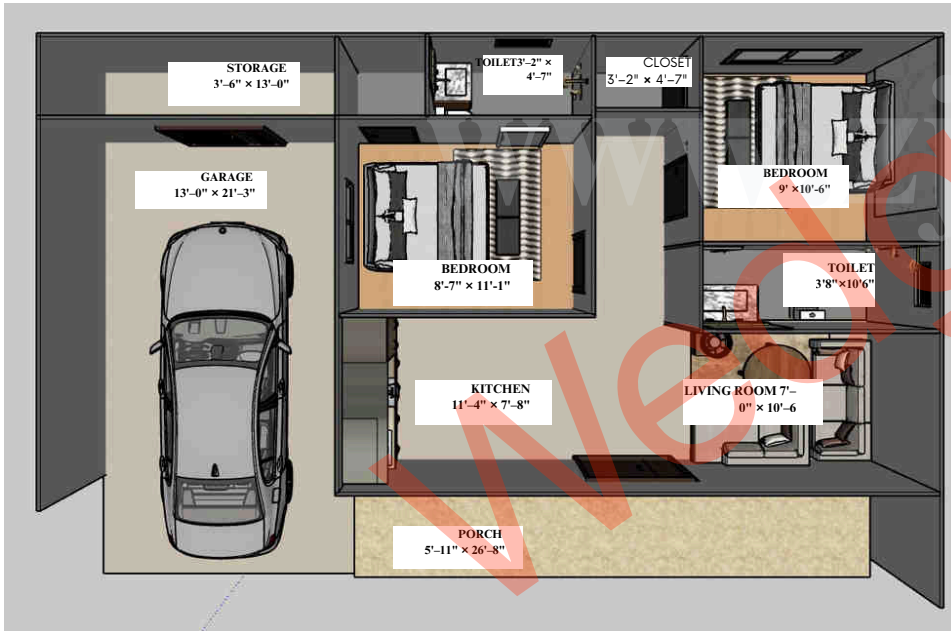


Single Storey House

EliteDwell

G

1000 Sqft (2bhk)



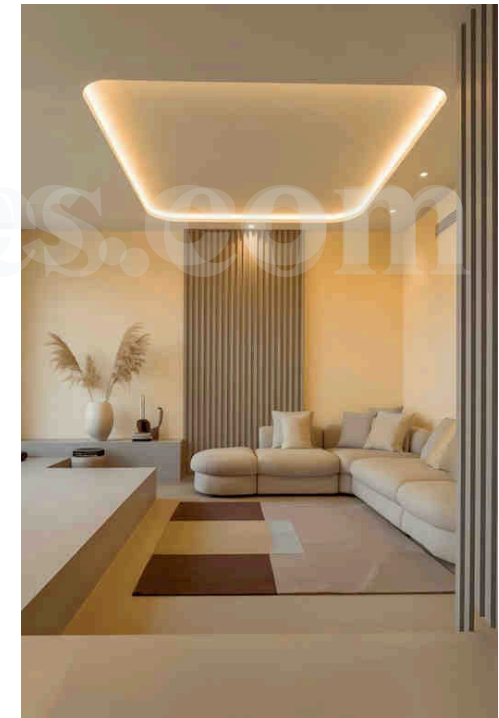
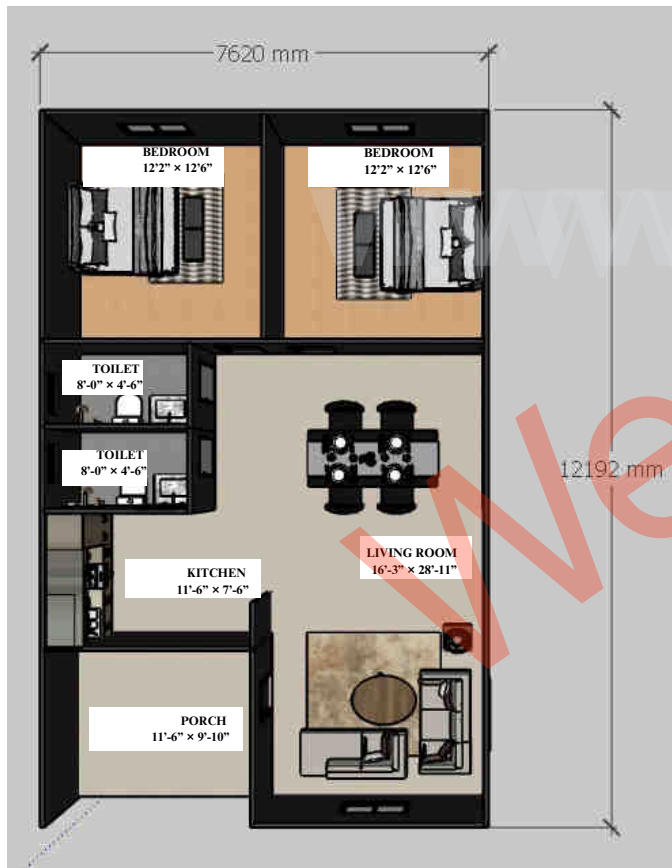


Single Storey House

CozyCube

G

1000 Sqft (2bhk)



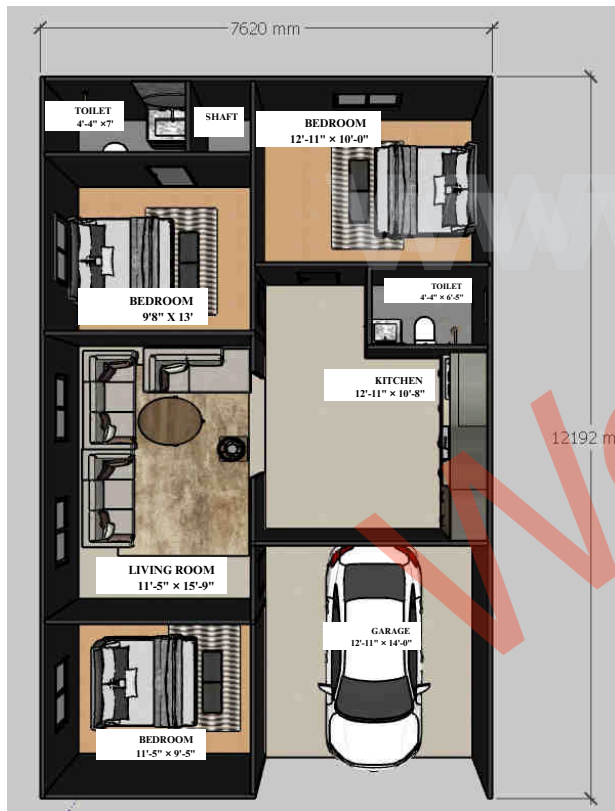


Single Storey House

LiveEase

G

1000 Sqft (3bhk)



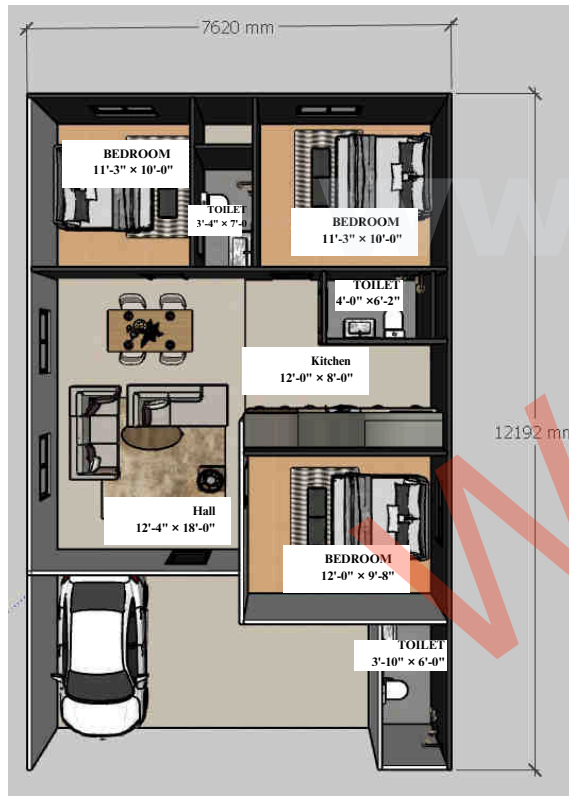


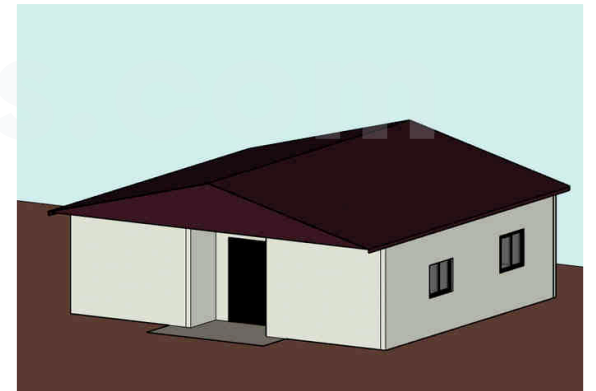
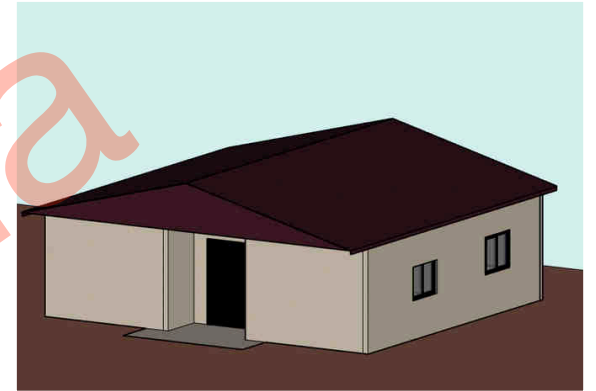
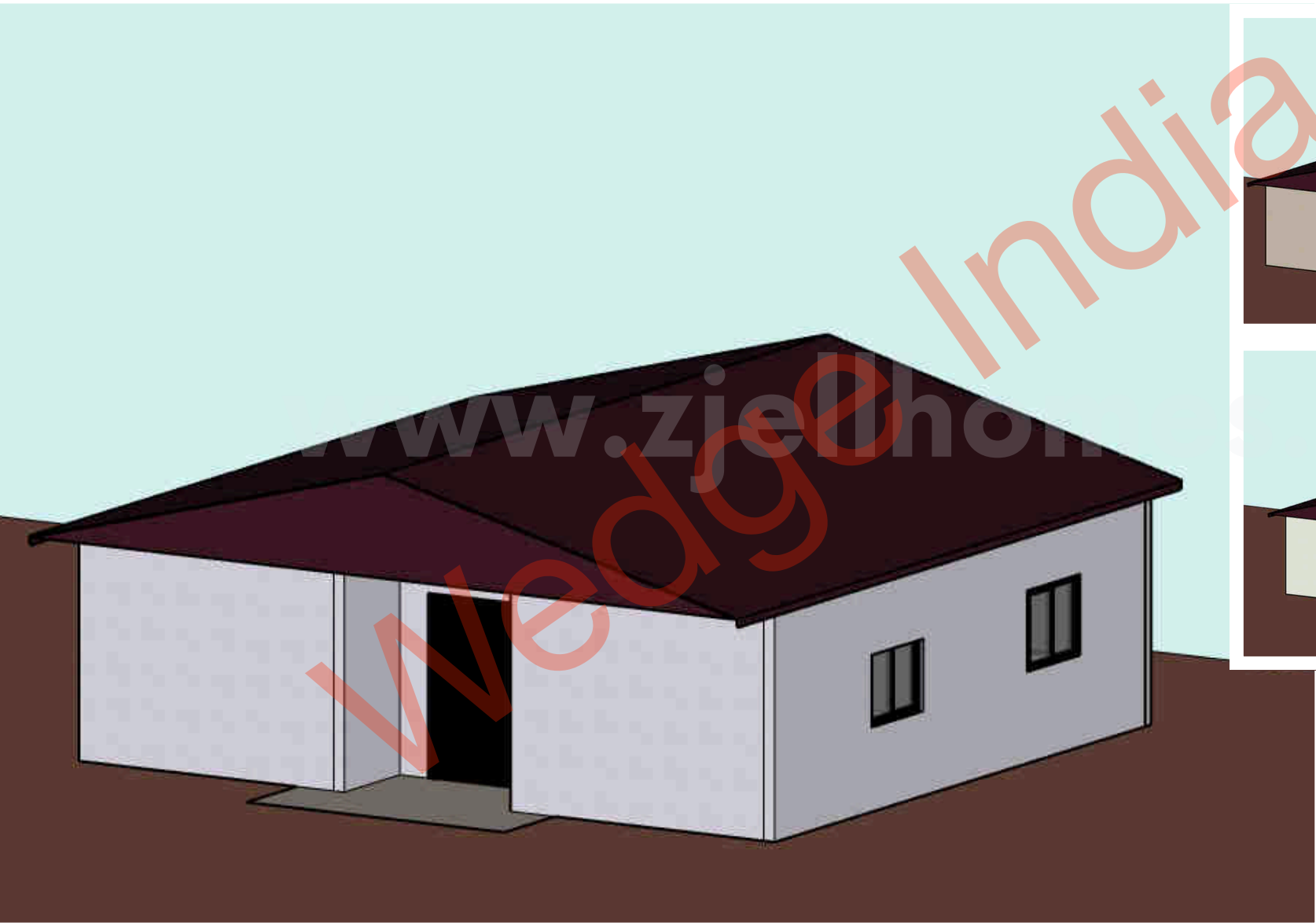
Single Storey House

BlissDwell

G

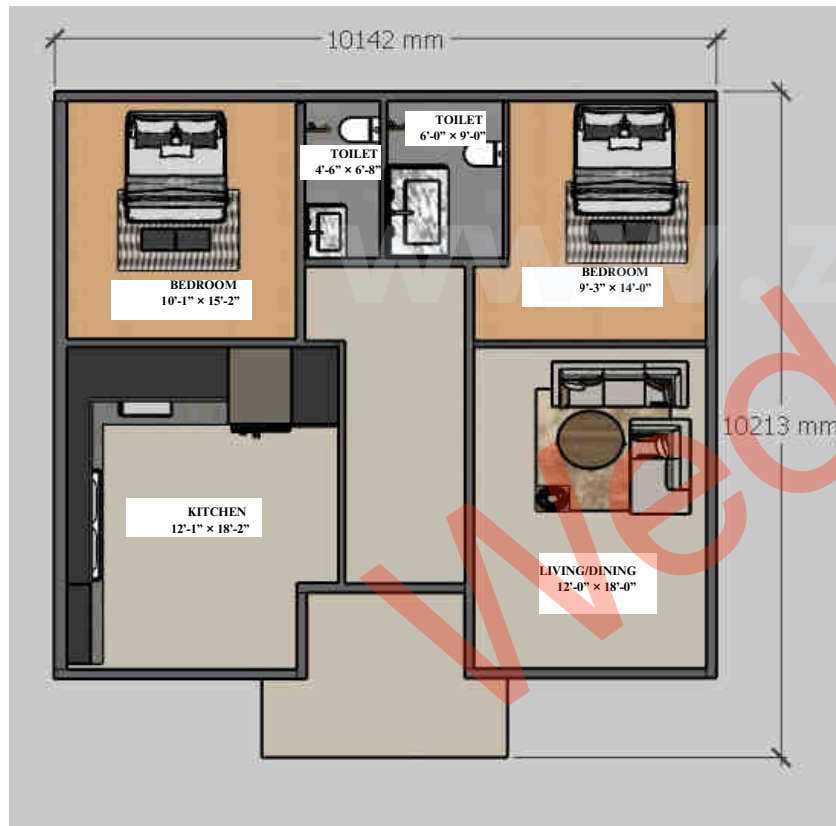
1000sqft (3bhk)





Single Storey House

Hive



G

1022 Sqft (2bhk)



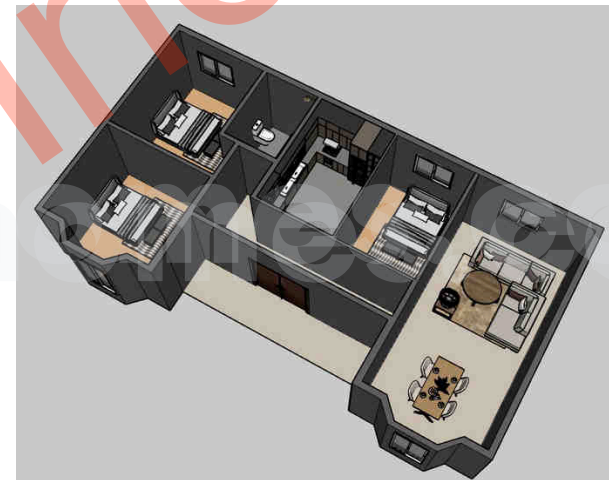
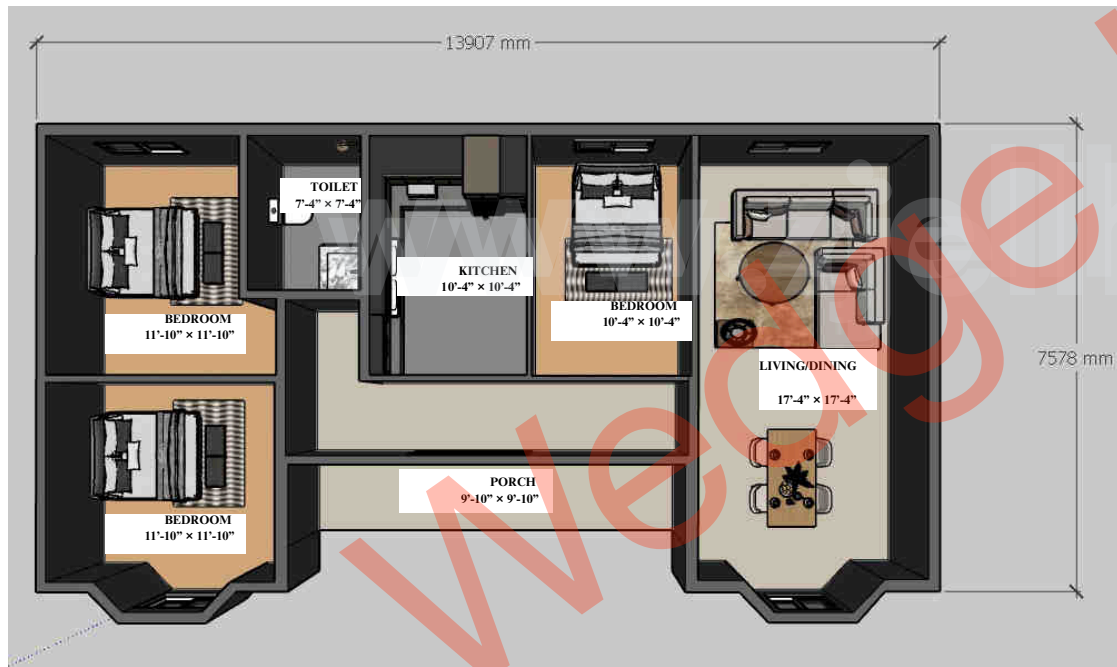


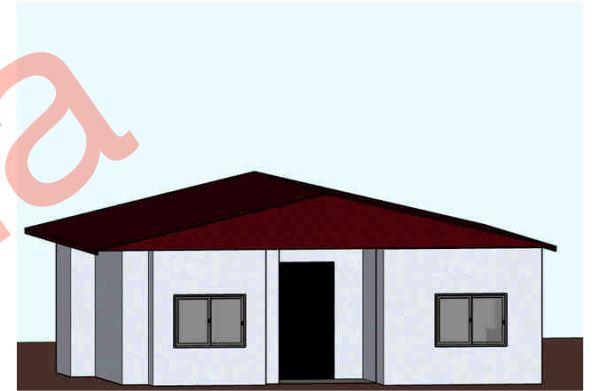
Single Storey House

PrestigeHaus

G

1044 Sqft (2bhk)



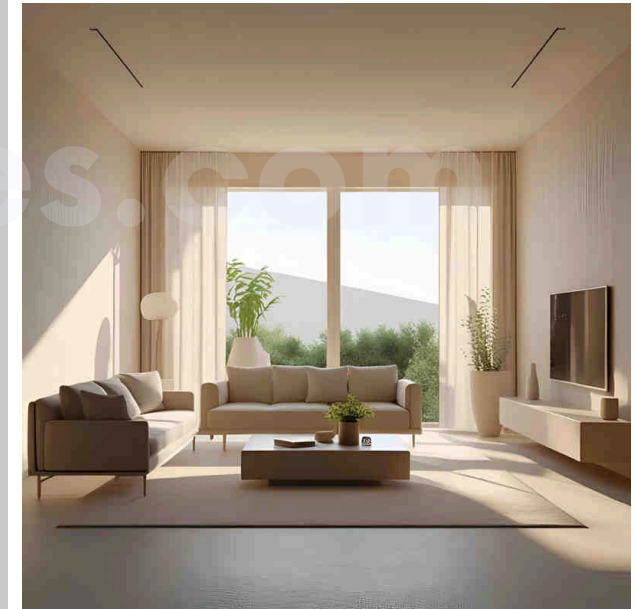
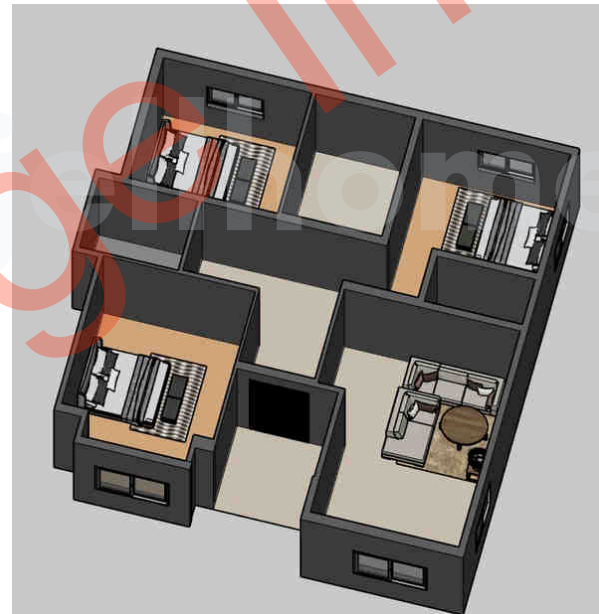
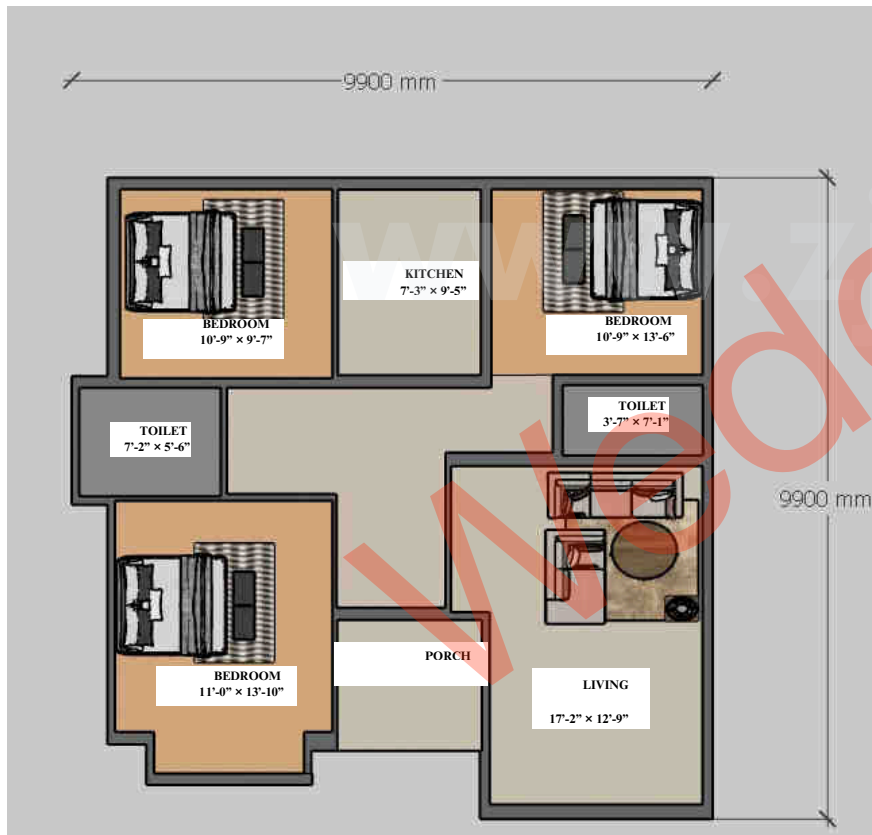


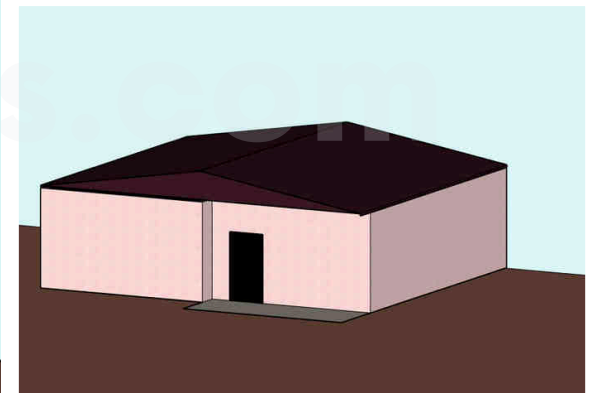
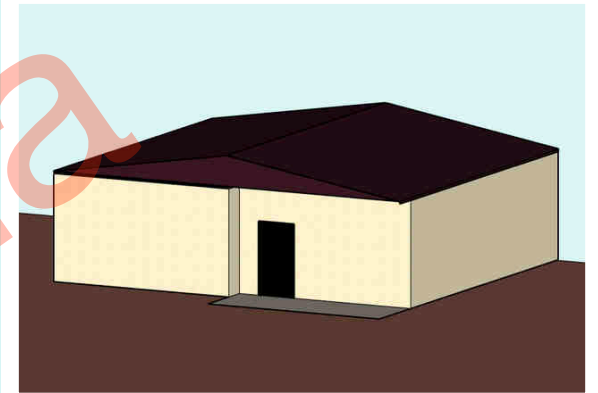
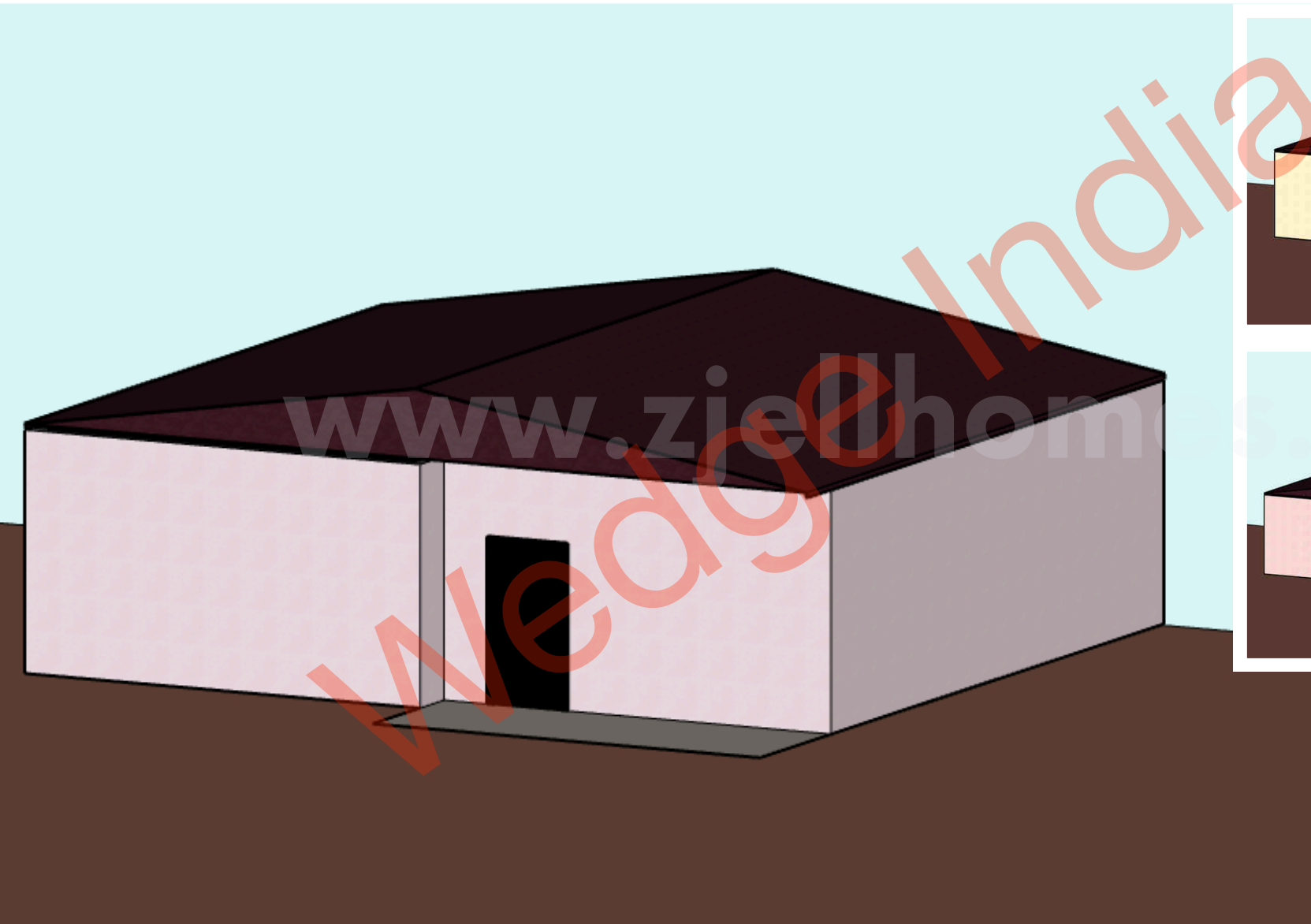
Single Storey House

Leafara

G

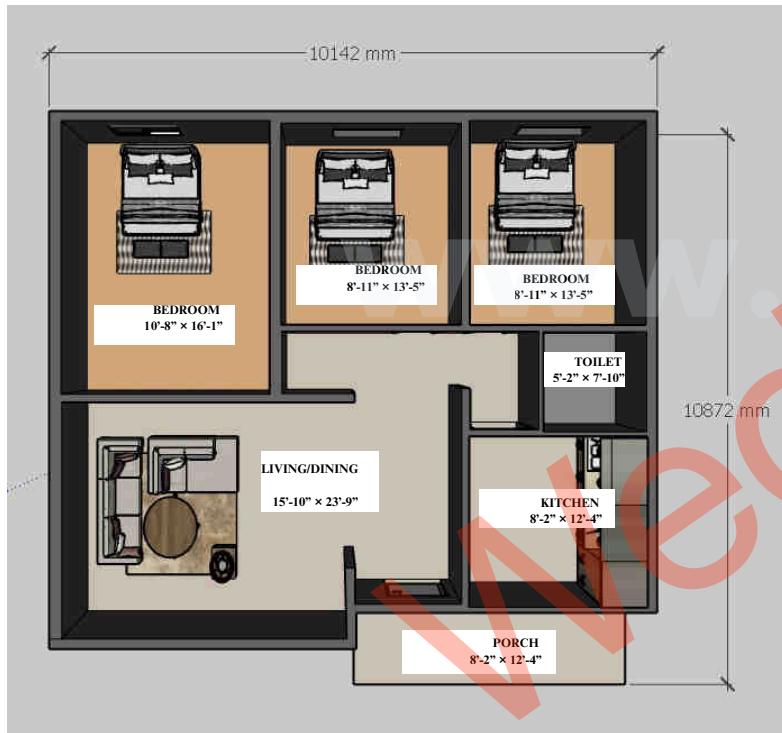
1055Sqft (3bhk)





Single Storey House

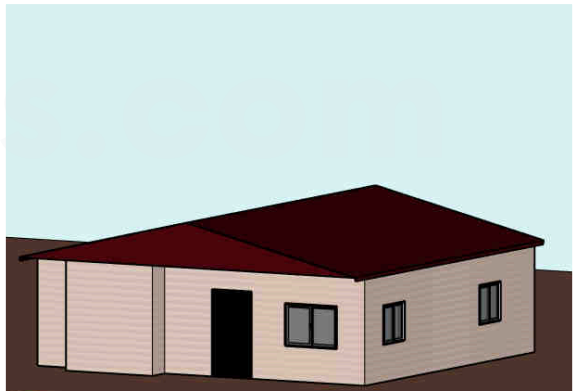
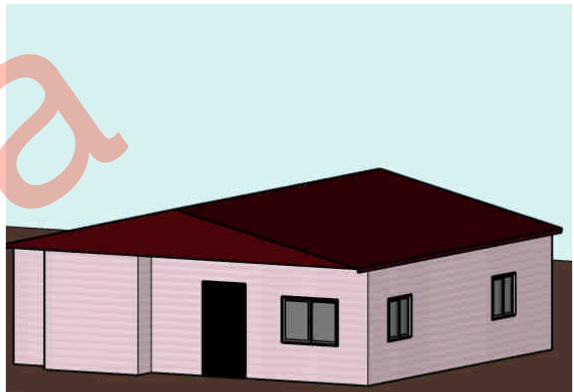
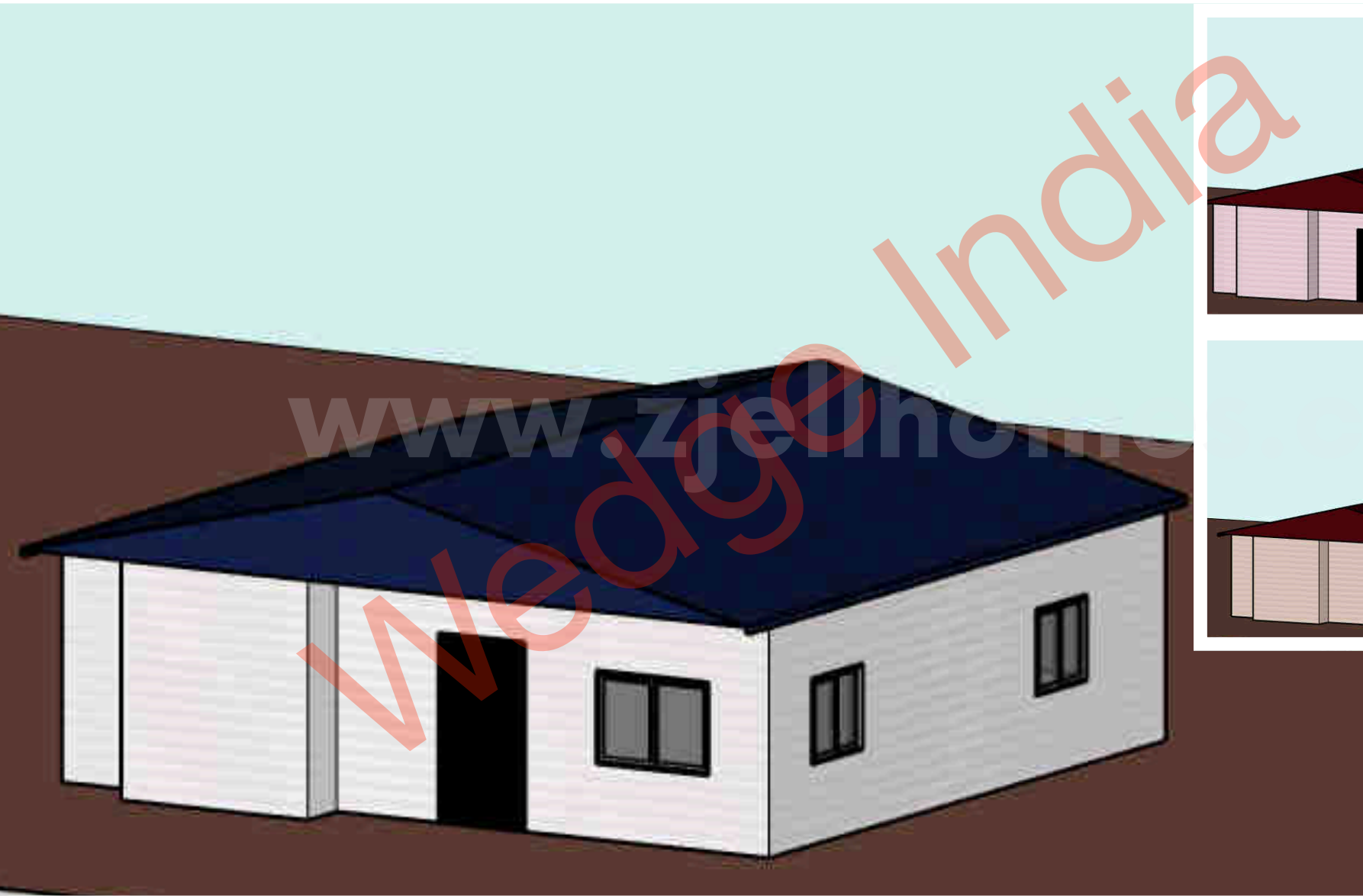
Neo



G

1108 Sqft (3bhk)



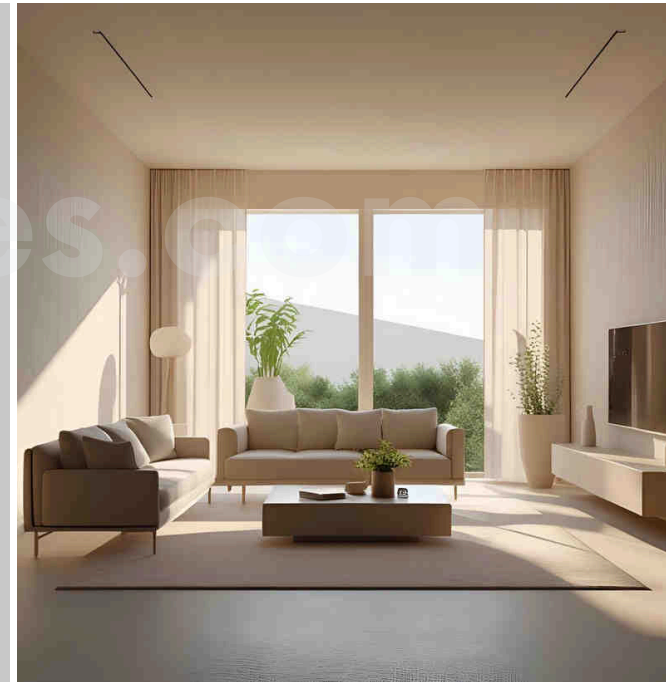
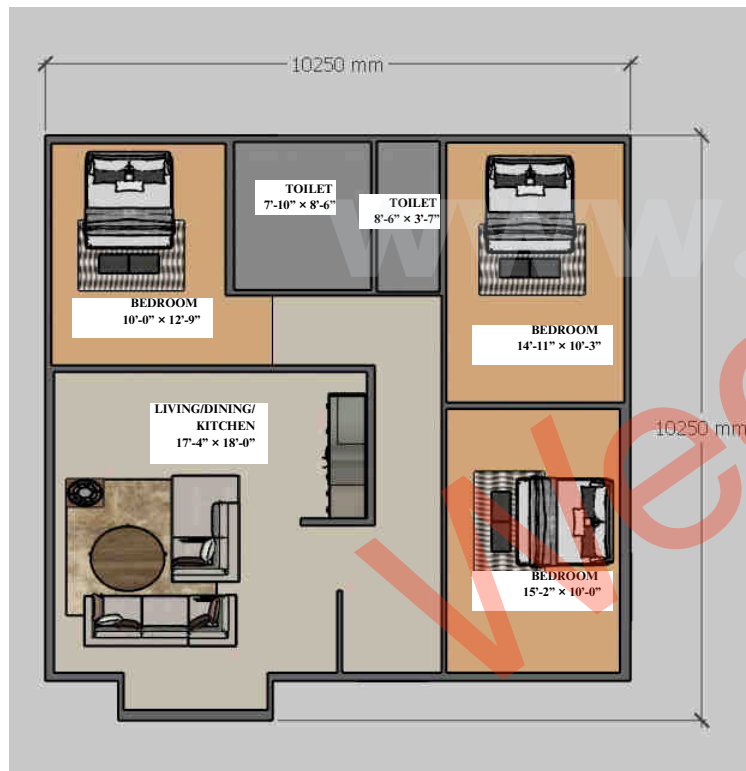


Single Storey House

Soluvo

G

1130 Sqft (3bhk)



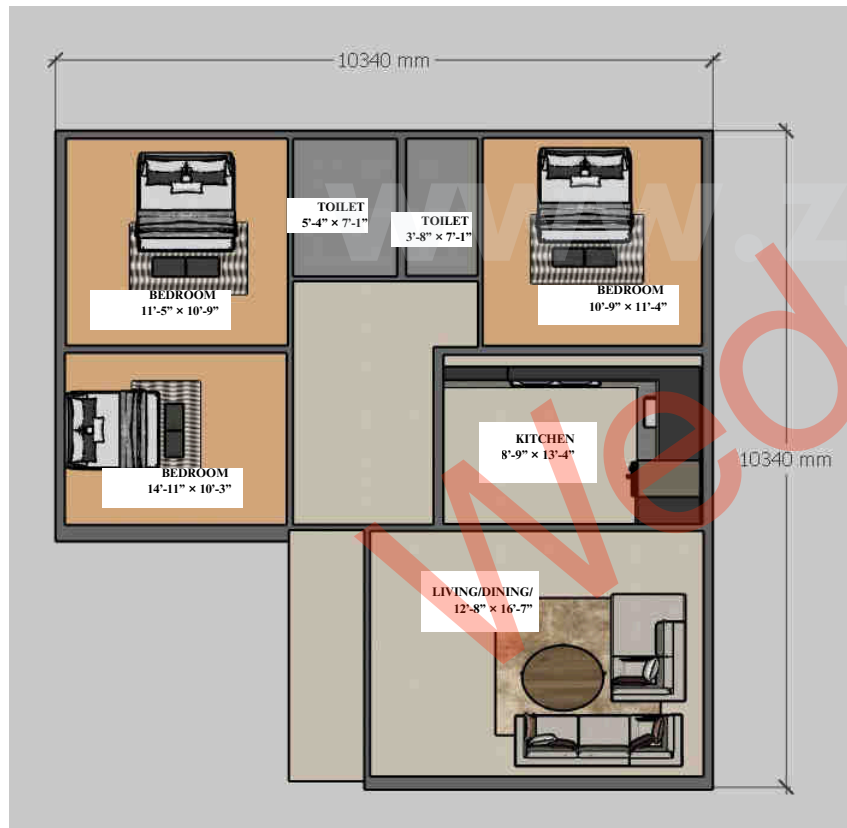


Single Storey House

Aurum

G

1152 Sqft (3bhk)



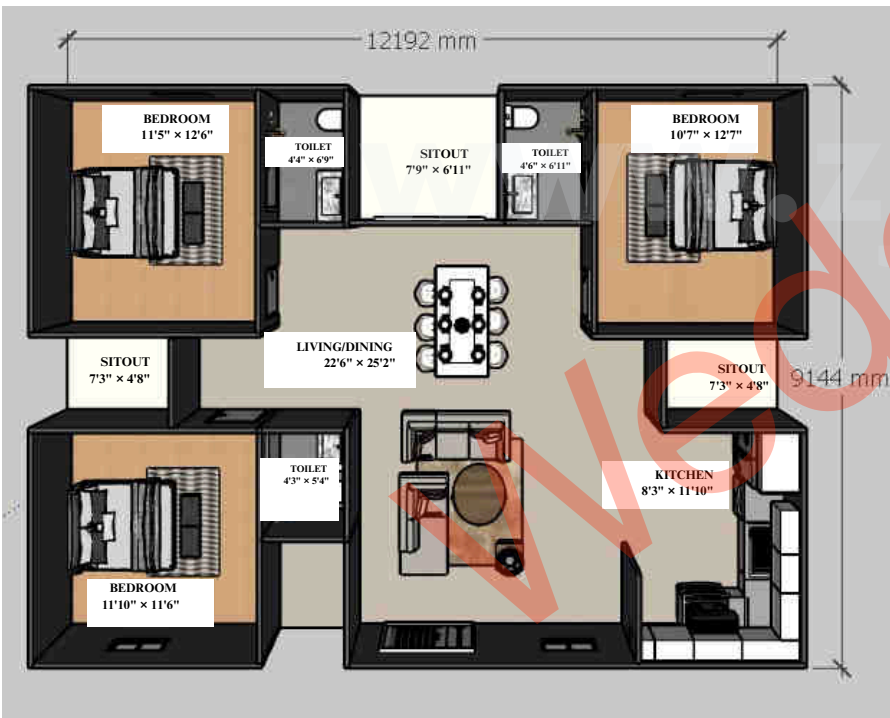


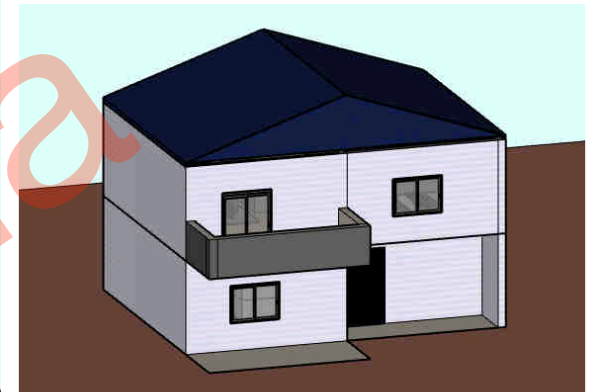
Single Storey House

Aurivio

G

1200Sqft (3bhk)



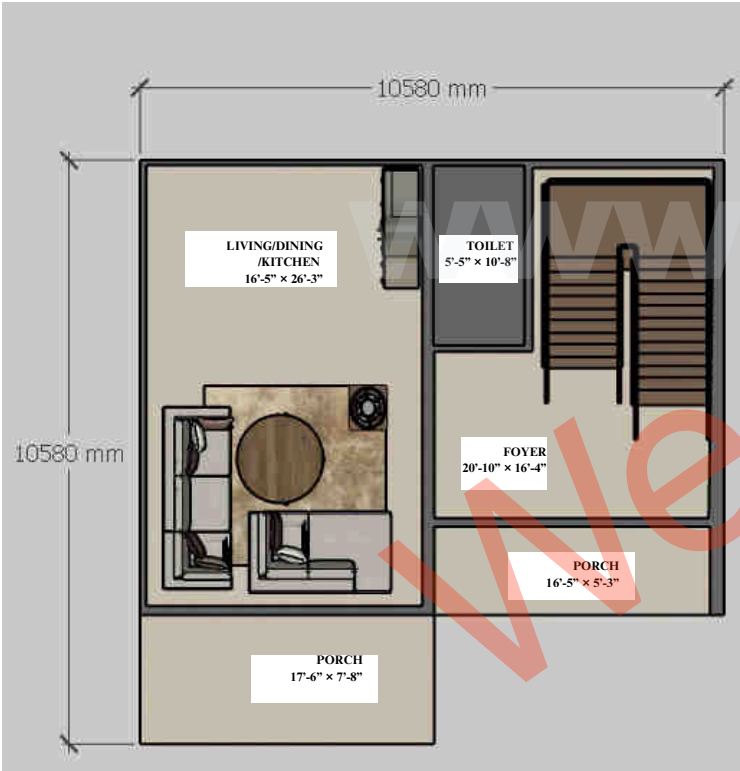


Double Storey House

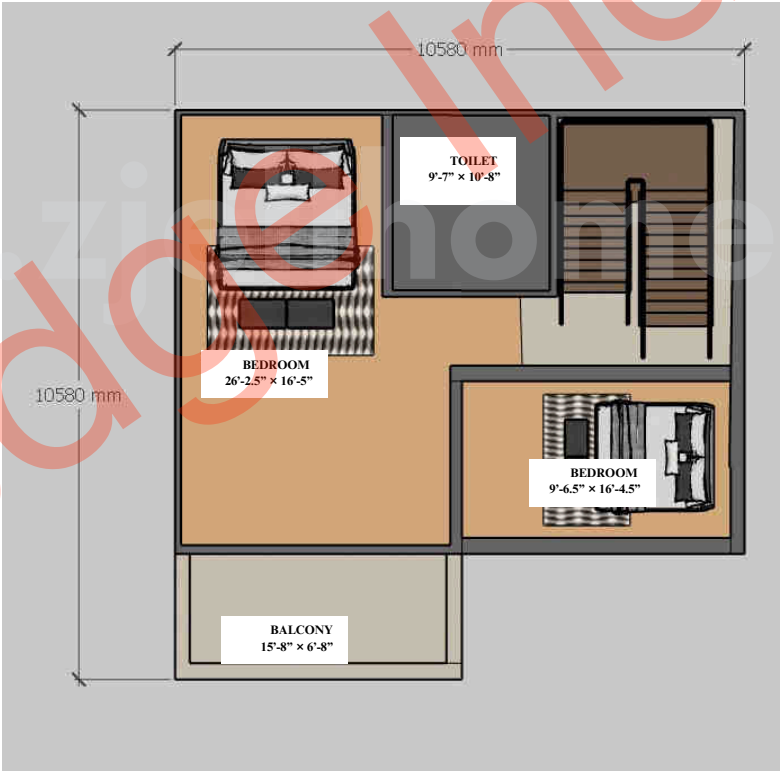
Celeste

G+1

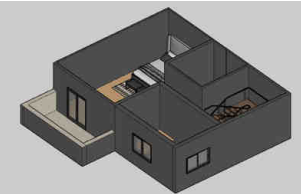
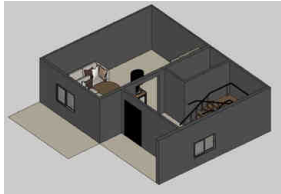
1204Sqft (2bhk)



Ground Floor Plan



First Floor Plan



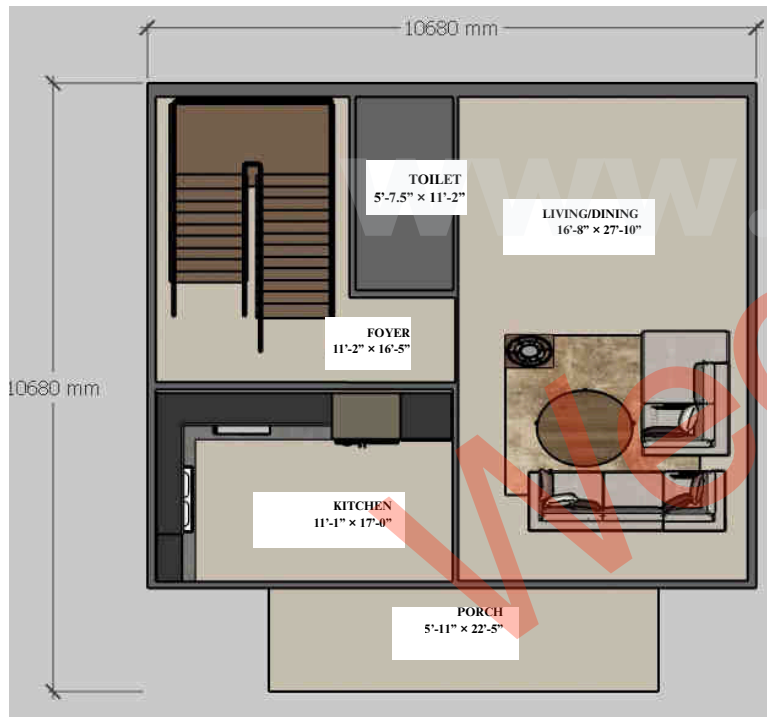


Double Storey House

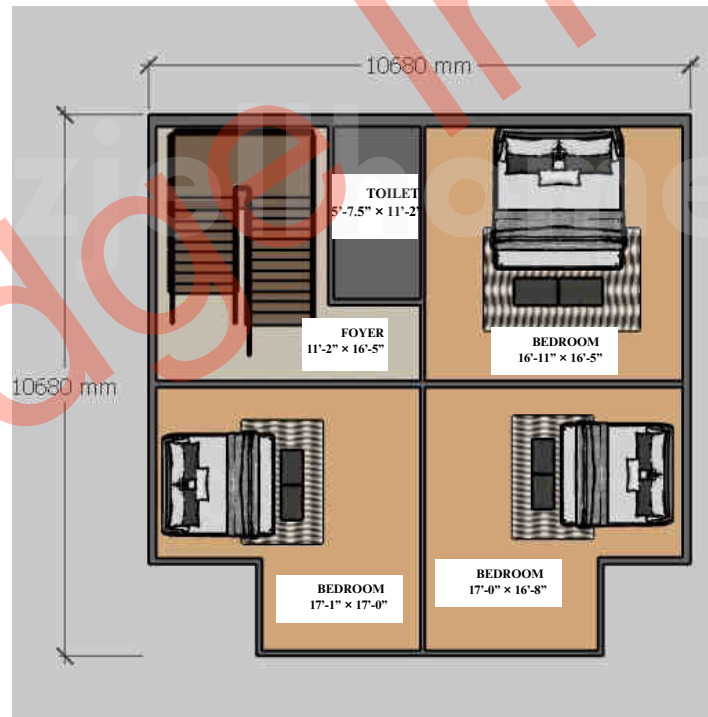
Elara

G+1

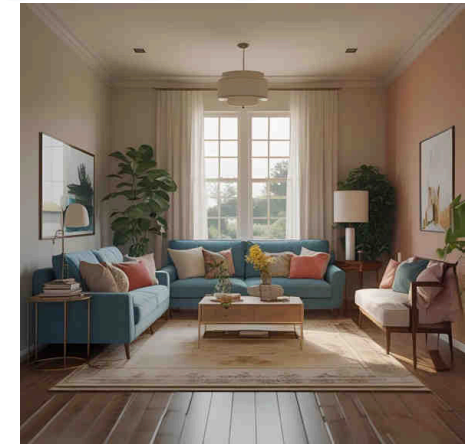
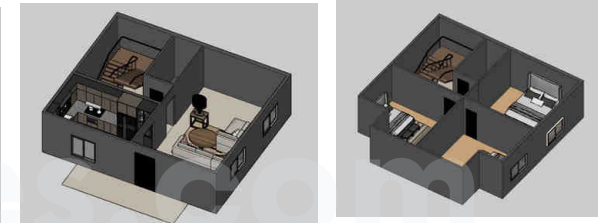
1227Sqft (3bhk)



Ground Floor Plan



First Floor Plan



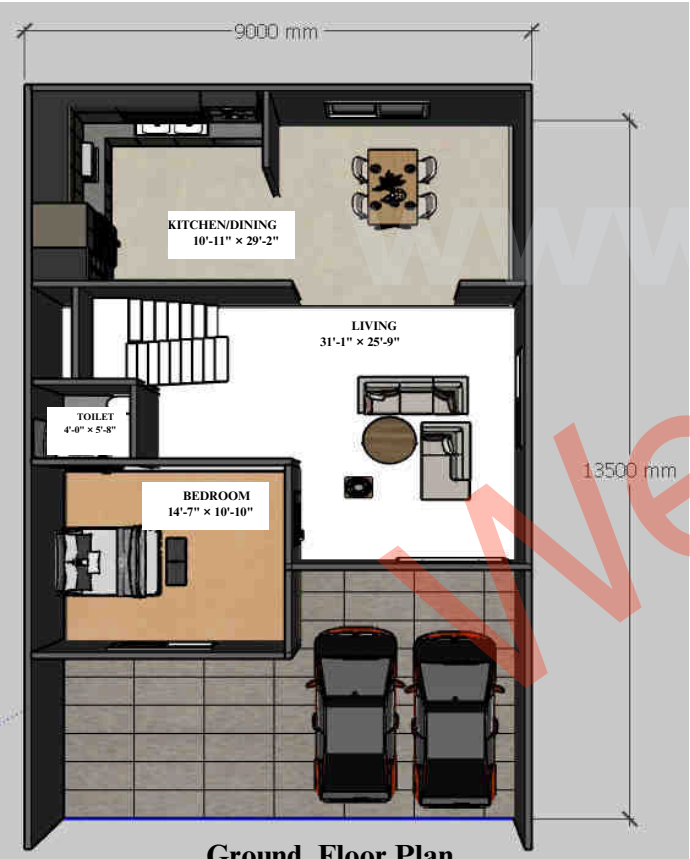


Double Storey House

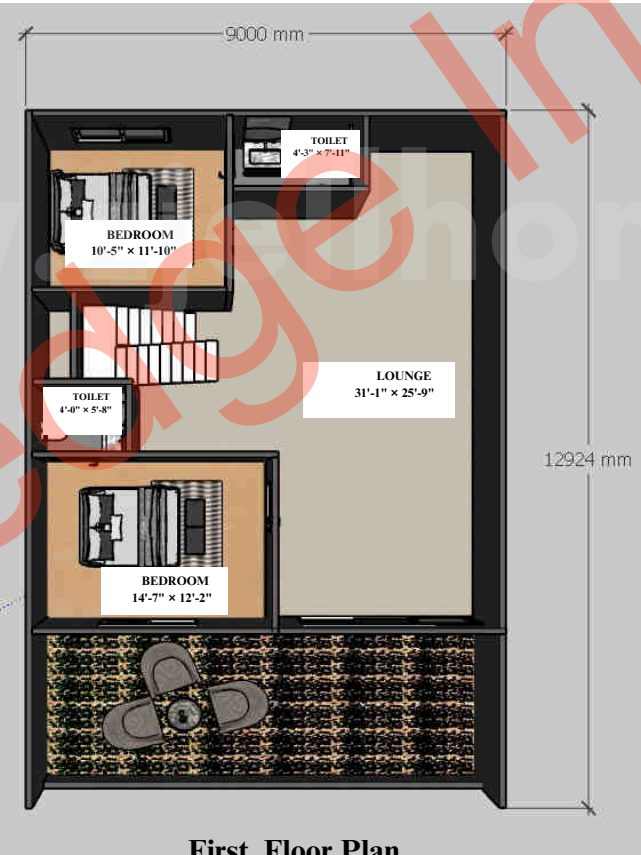
NeoHaus

G+1

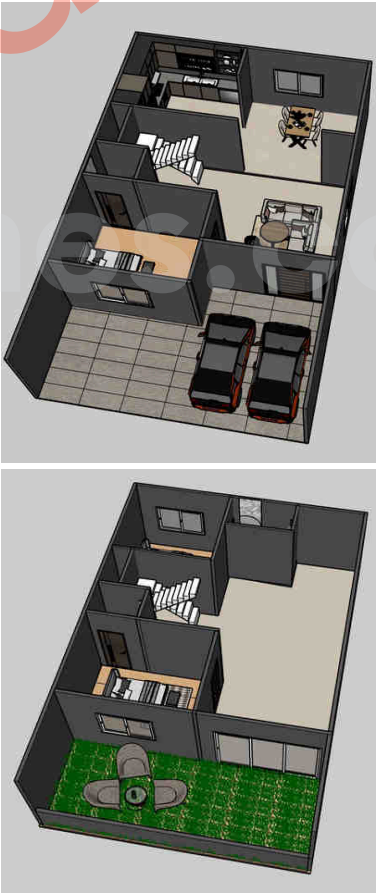
1300Sqft (3bhk)

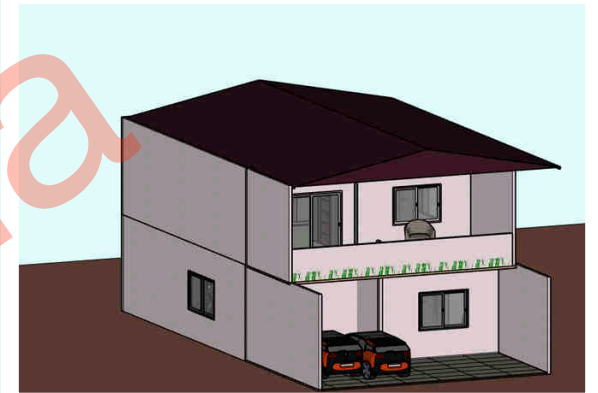


Ground Floor Plan



First Floor Plan





Double Storey House

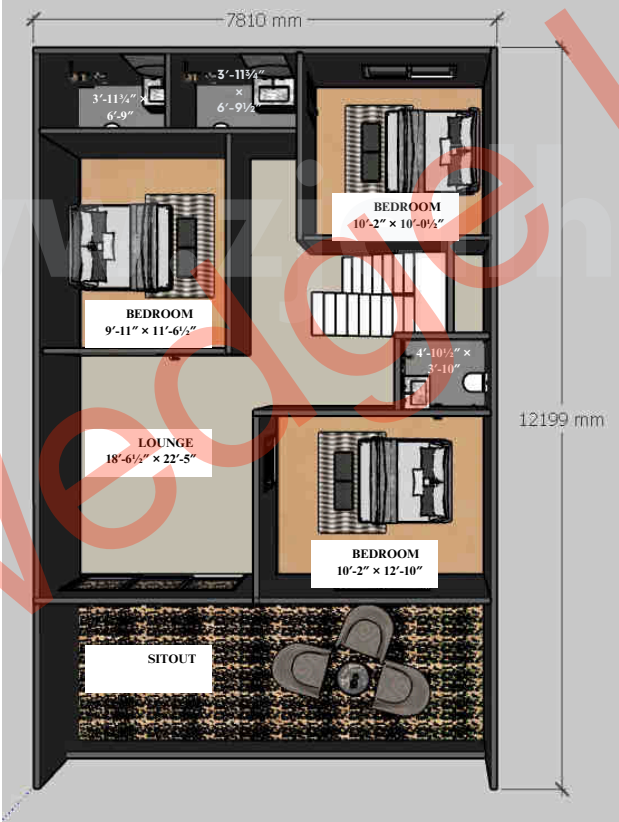
VertoNest

G+1

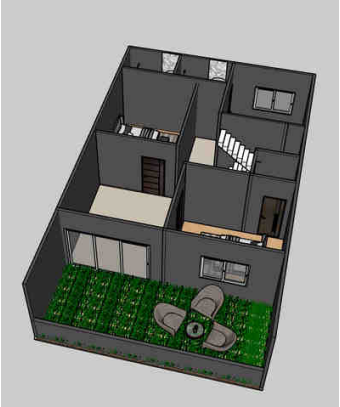
1313sqft (4bhk)

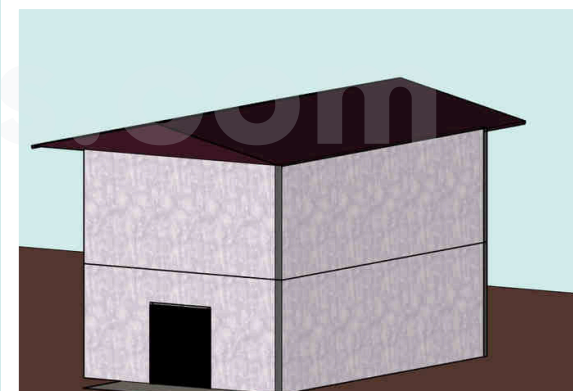
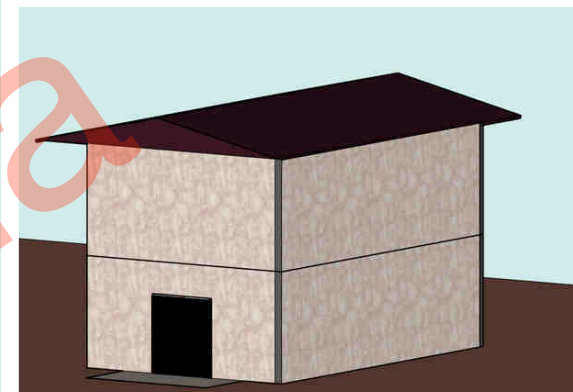


Ground Floor Plan



First Floor Plan



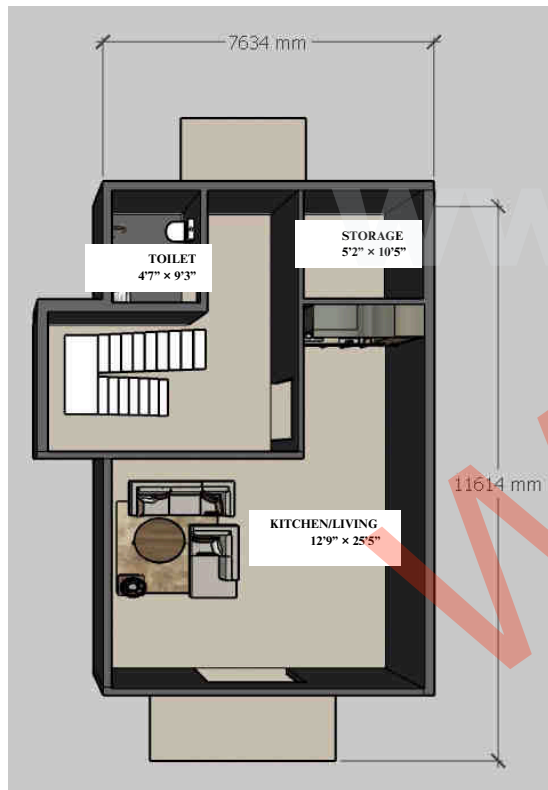


Double Storey House

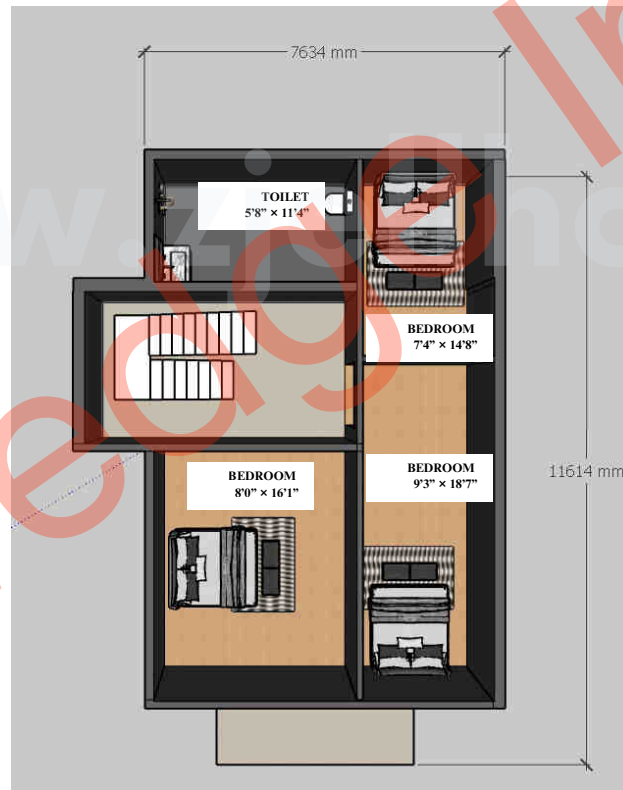
NexoNest

G+1

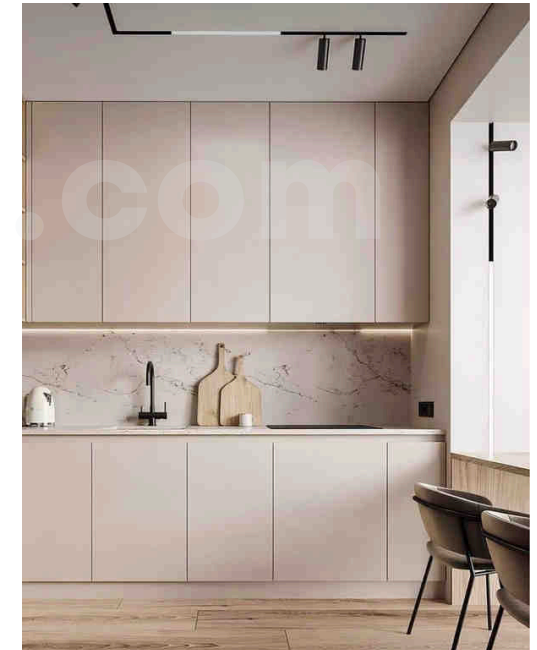
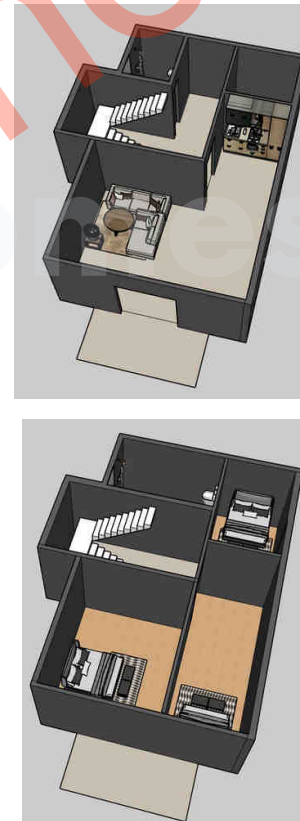
1356sqft (3bhk)

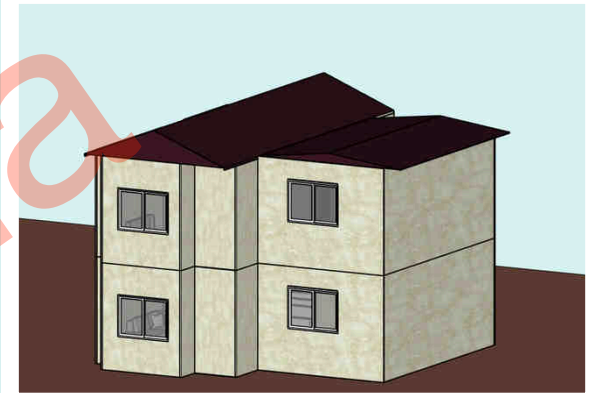


Ground Floor Plan



First Floor Plan



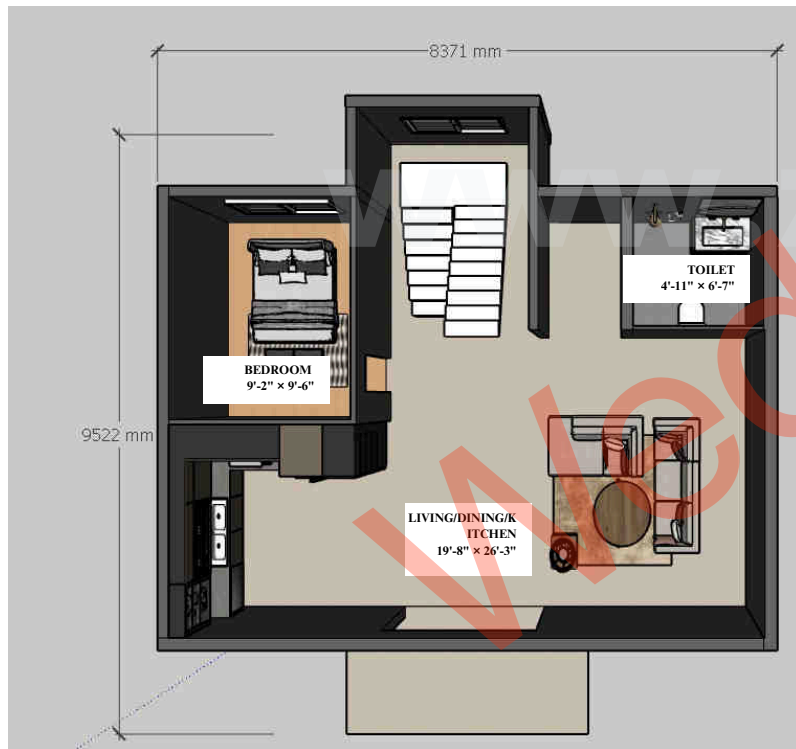


Double Storey House

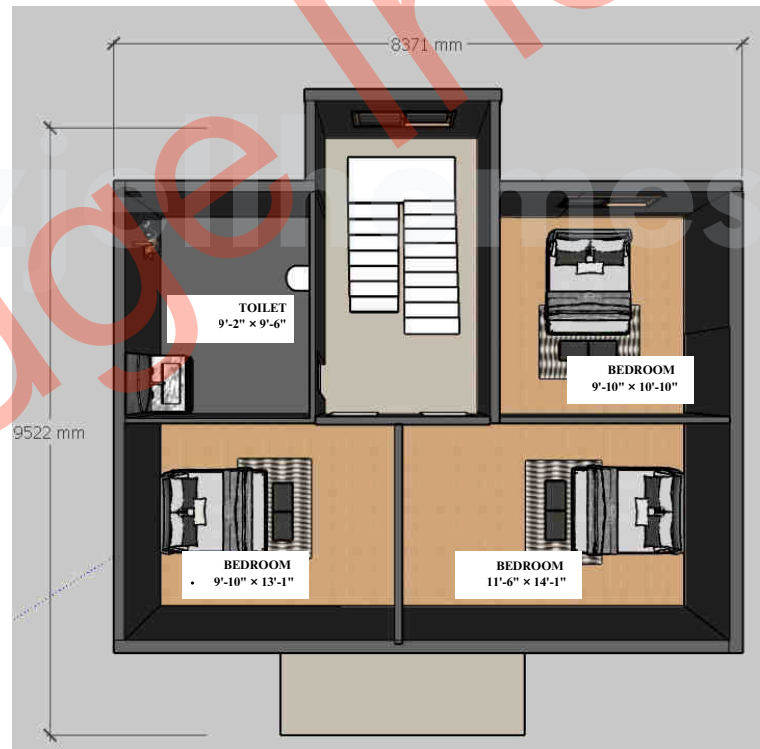
TekNest

G+1

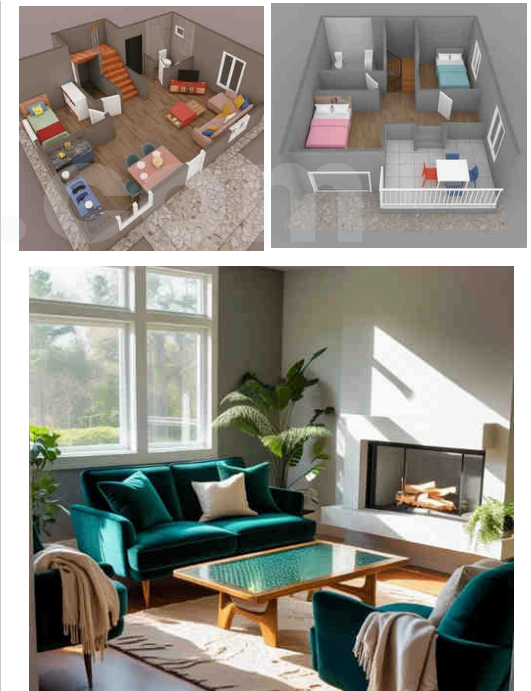
1378sqft (4bhk)

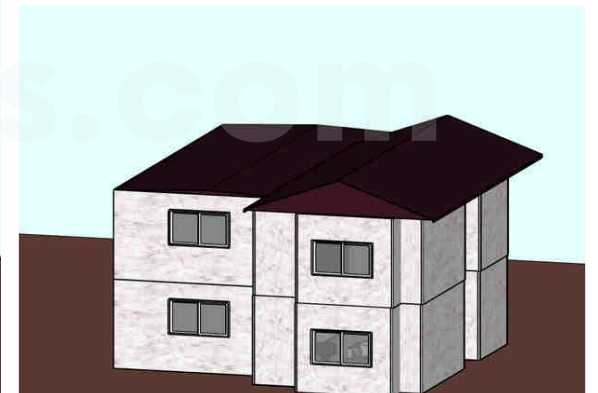
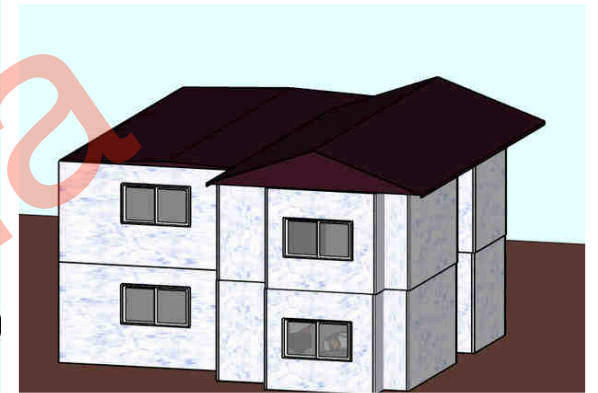


Ground Floor Plan



First Floor Plan



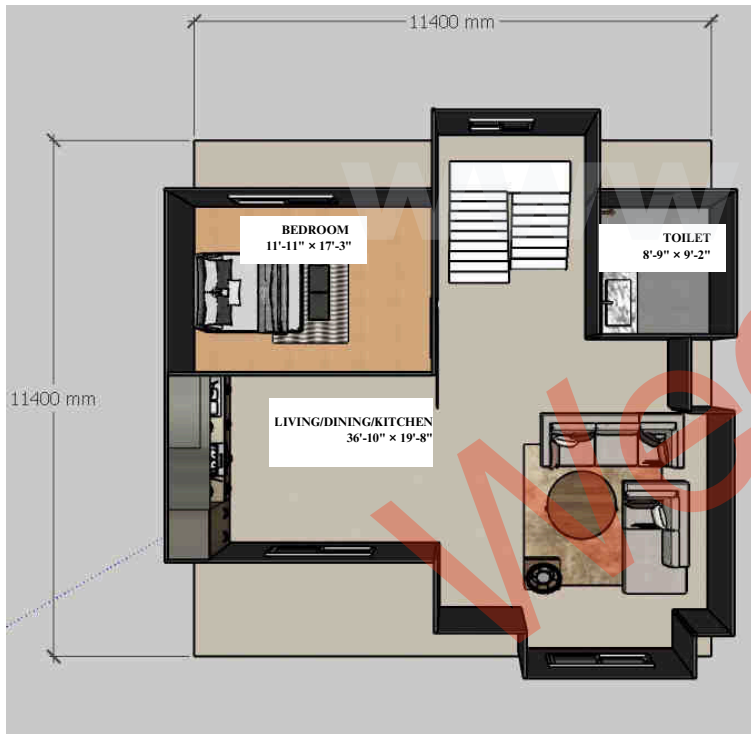


Double Storey House

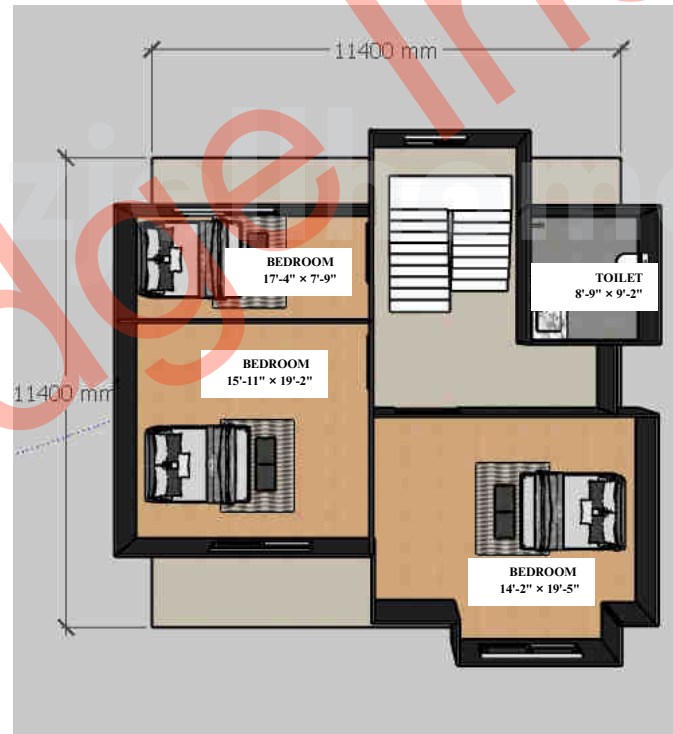
Structo

G+1

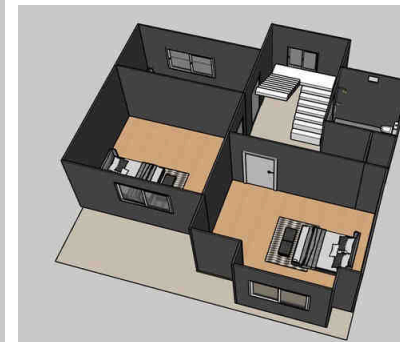
1400 sqft (3bhk)



Ground Floor Plan



First Floor Plan



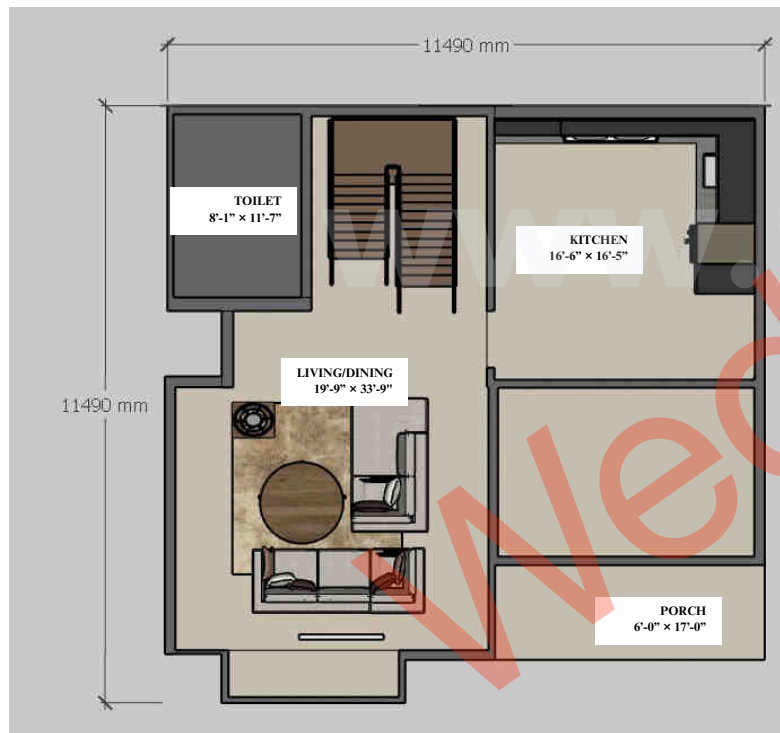


Double Storey House

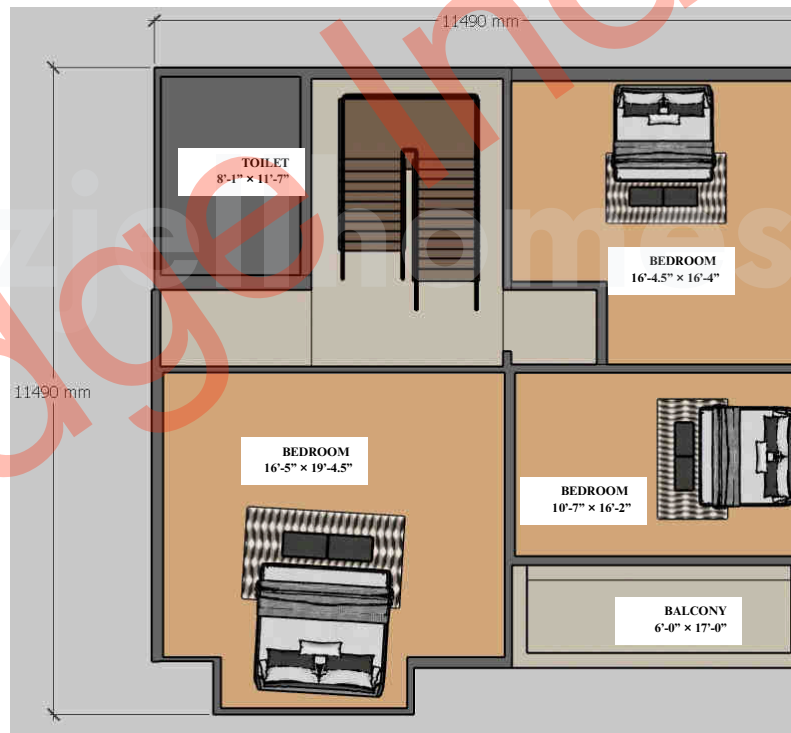
Aurelia

G+1

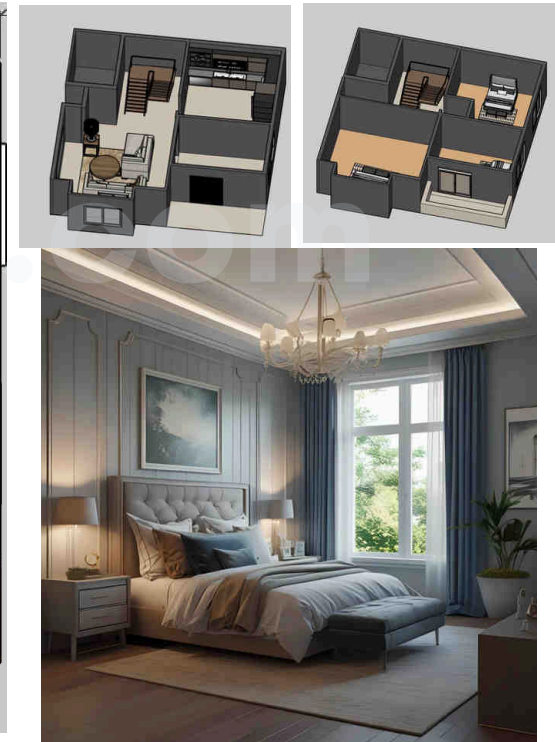
1420 sqft (2bhk)

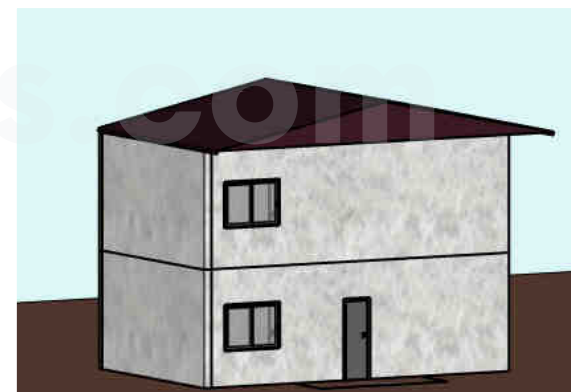
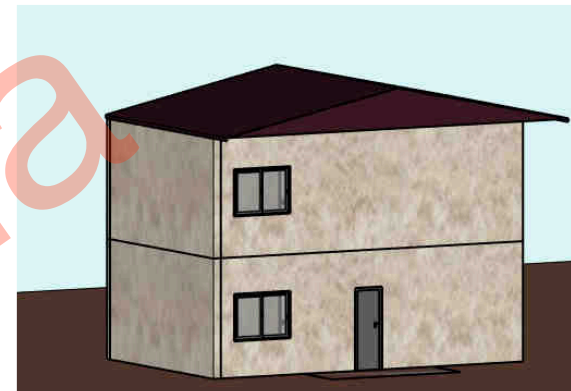


Ground Floor Plan



First Floor Plan



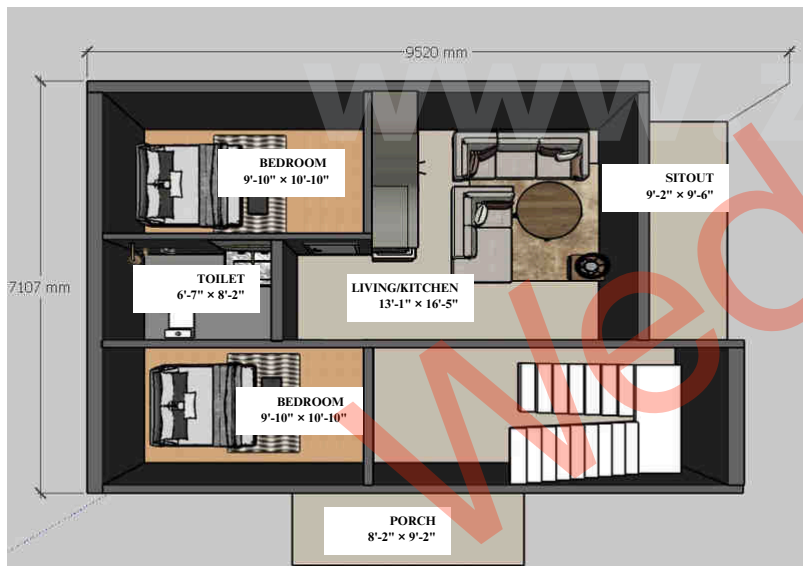


Double Storey House

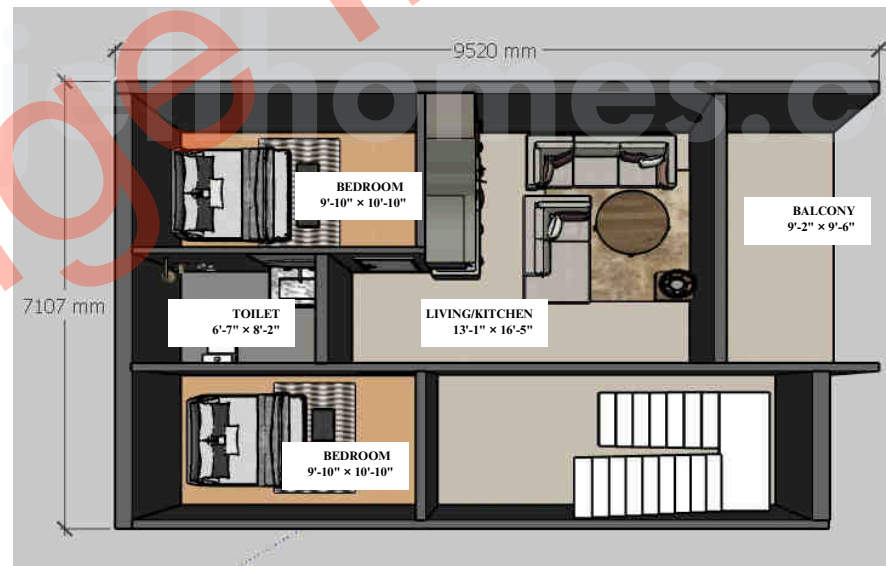
SwiftHaus

G+1

1475 sqft (2bhk)



Ground Floor Plan



First Floor Plan



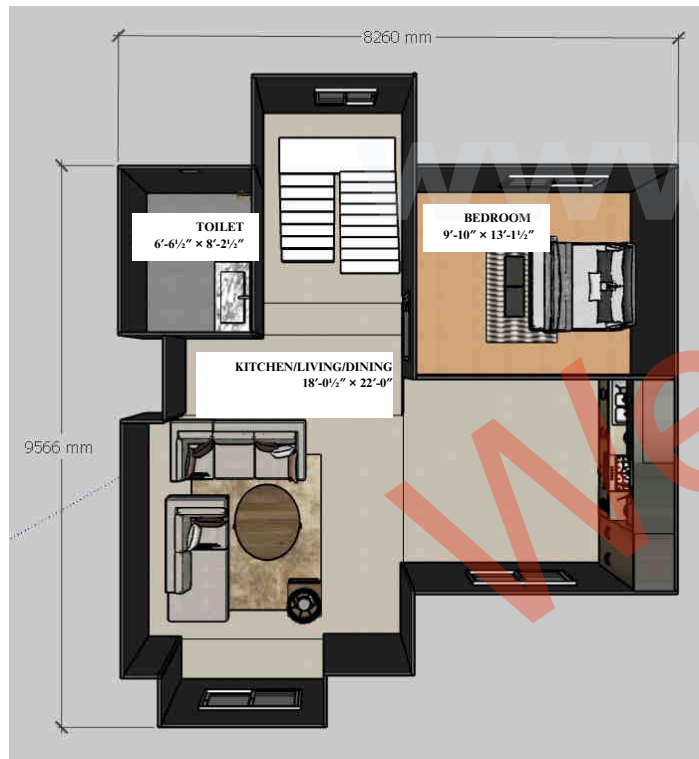


Double Storey House

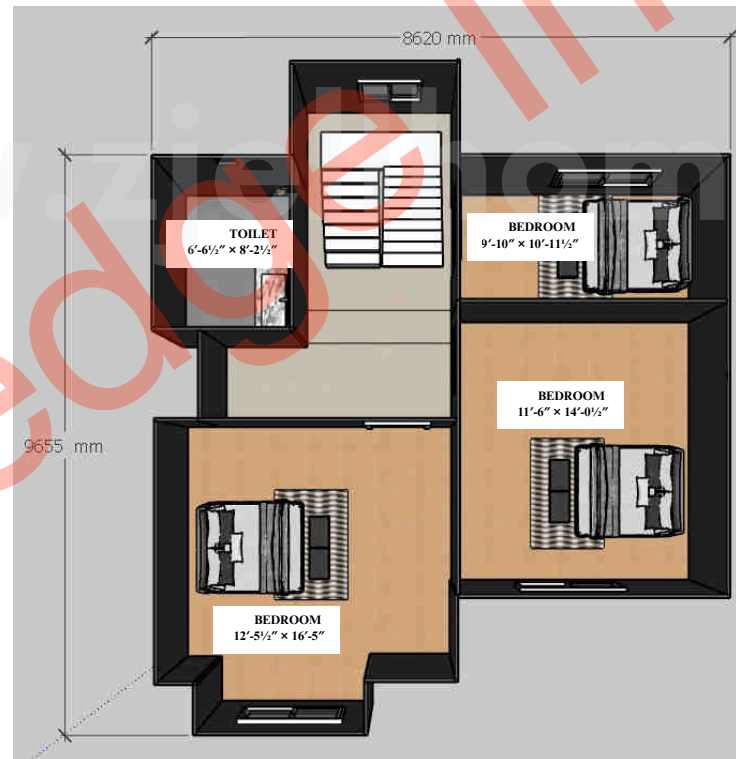
FastFrame

G+1

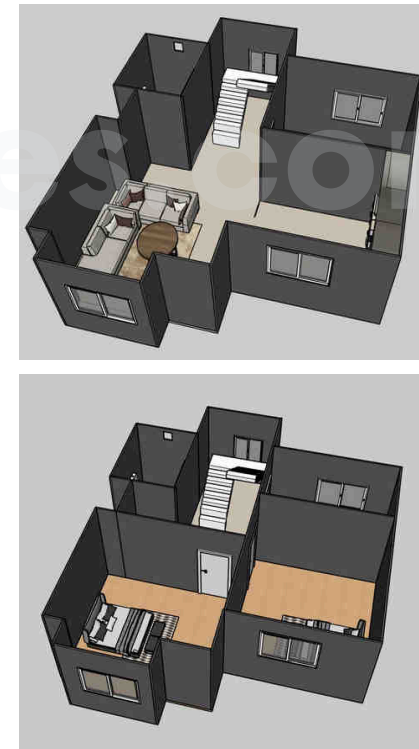
1485 sqft (3bhk)



Ground Floor Plan



First Floor Plan



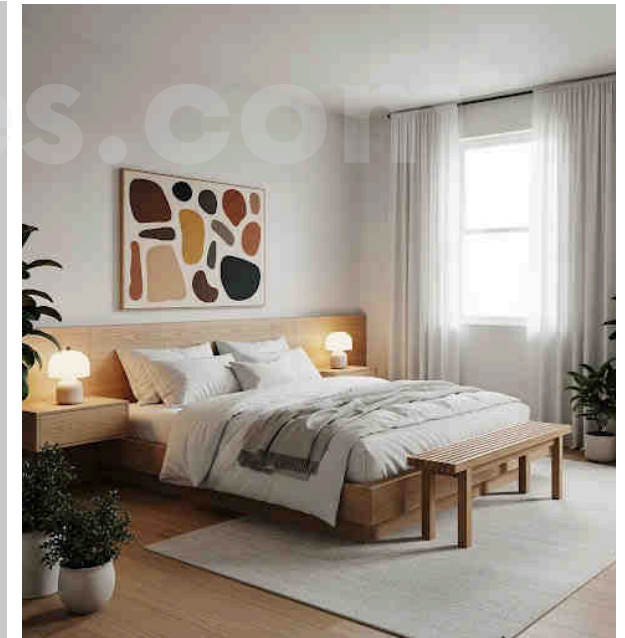


Single Storey House

EcoMod

G

1500sqft (3bhk)



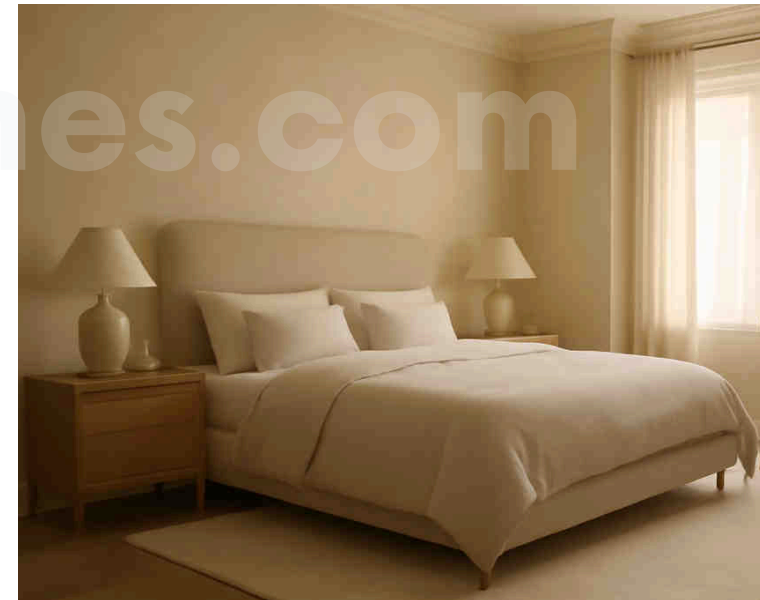


Single Storey House

HiveBox

G

1500sqft (3bhk)



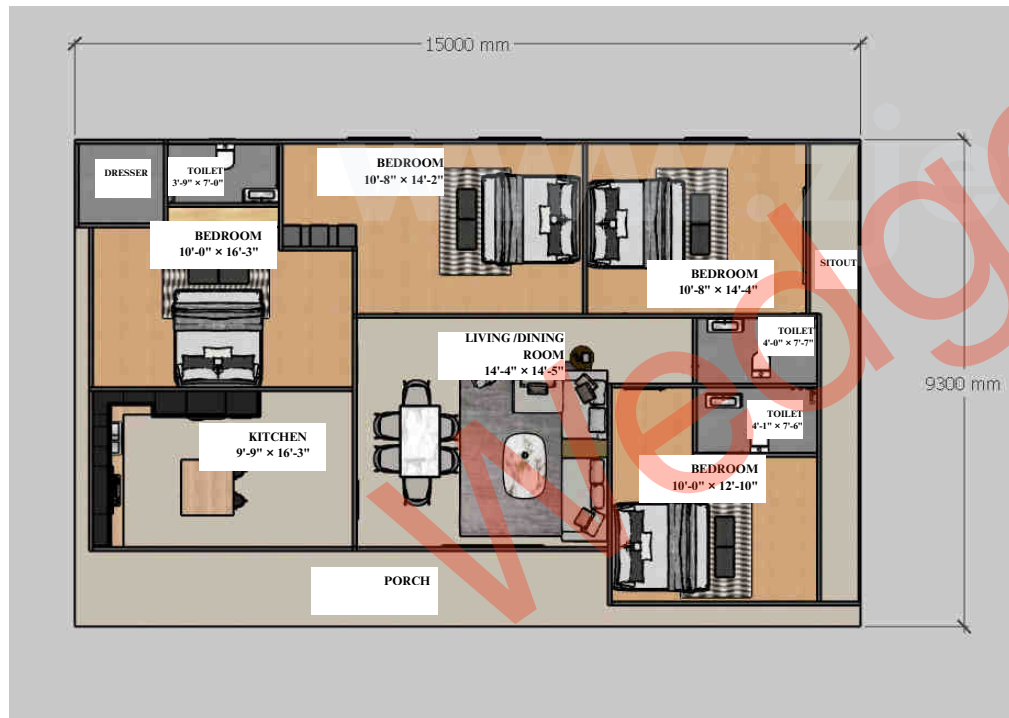


Single Storey House

SkyPod

G

1500sqft (4bhk)



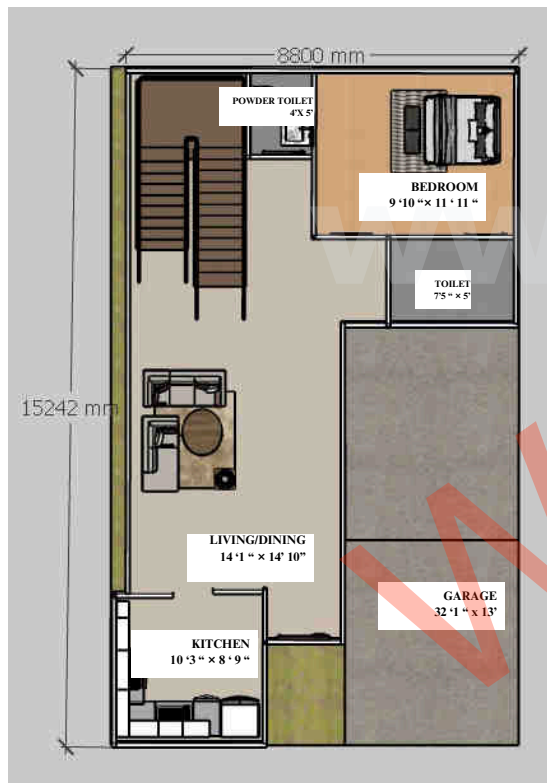


Double Storey House

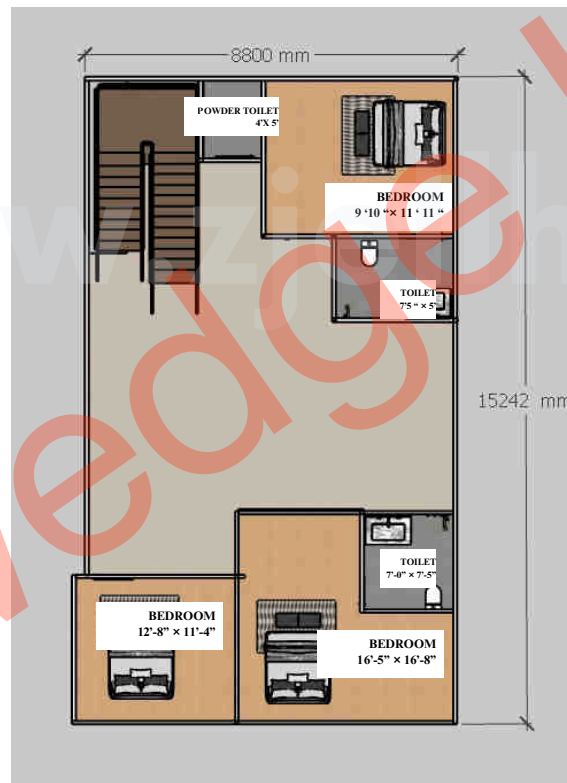
Podora

G+1

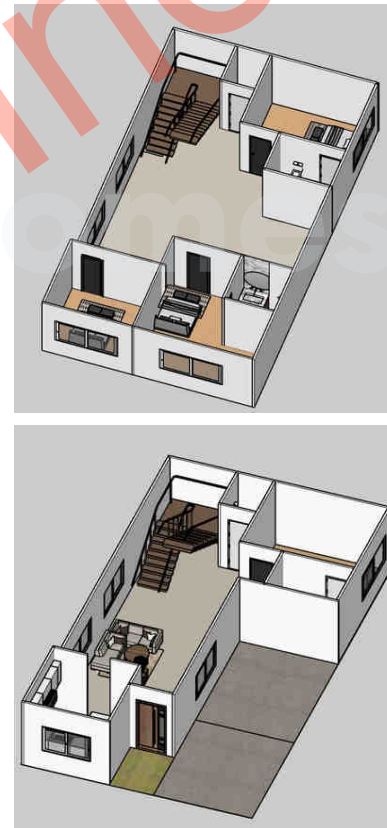
1500sqft (3bhk)

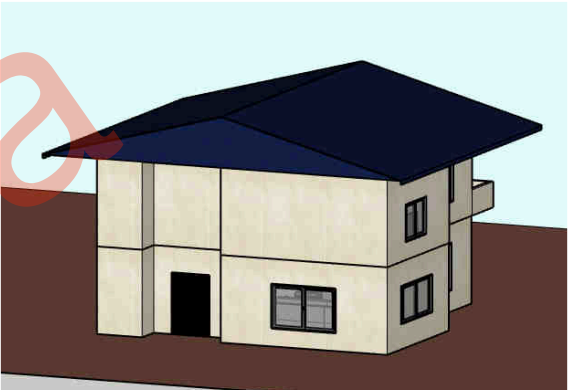


Ground floor plan



First floor plan



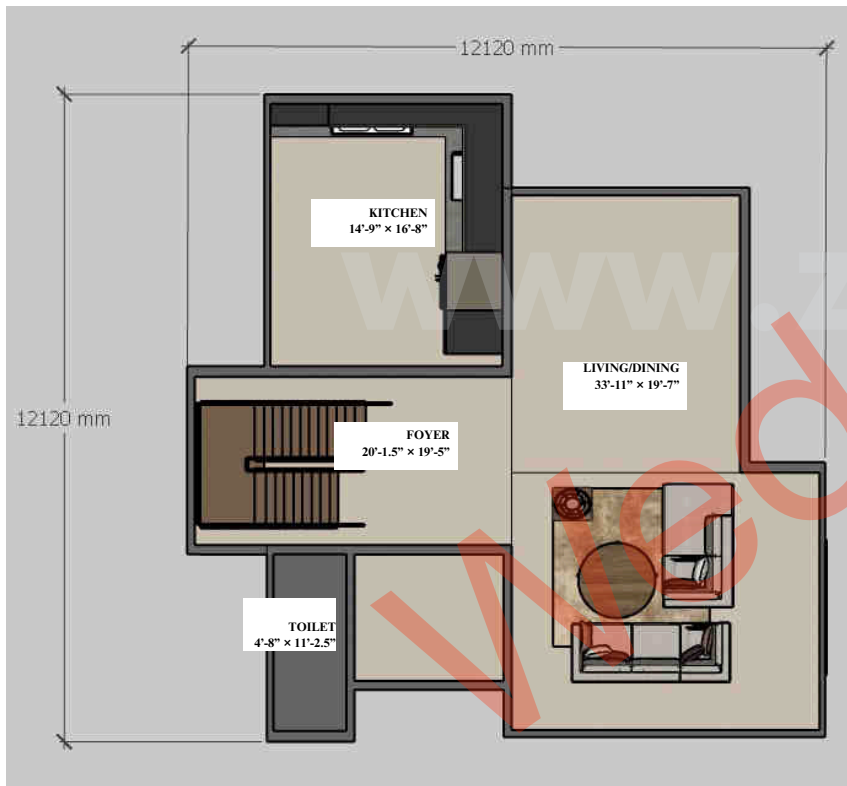


Double Storey House

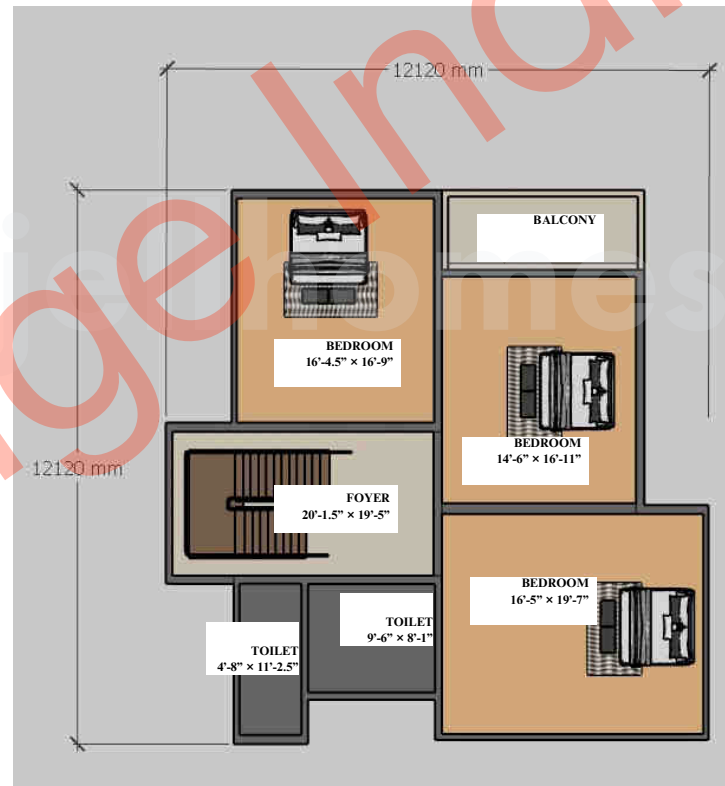
GrandCasa

G+1

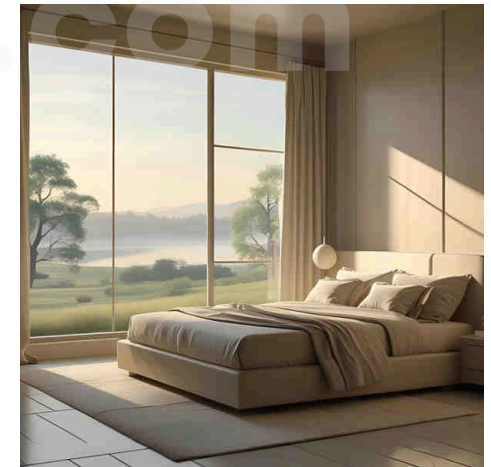
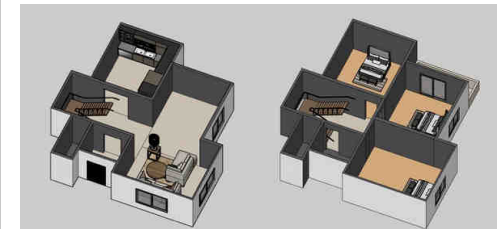
1583sqft (3bhk)



Ground floor plan



First floor plan



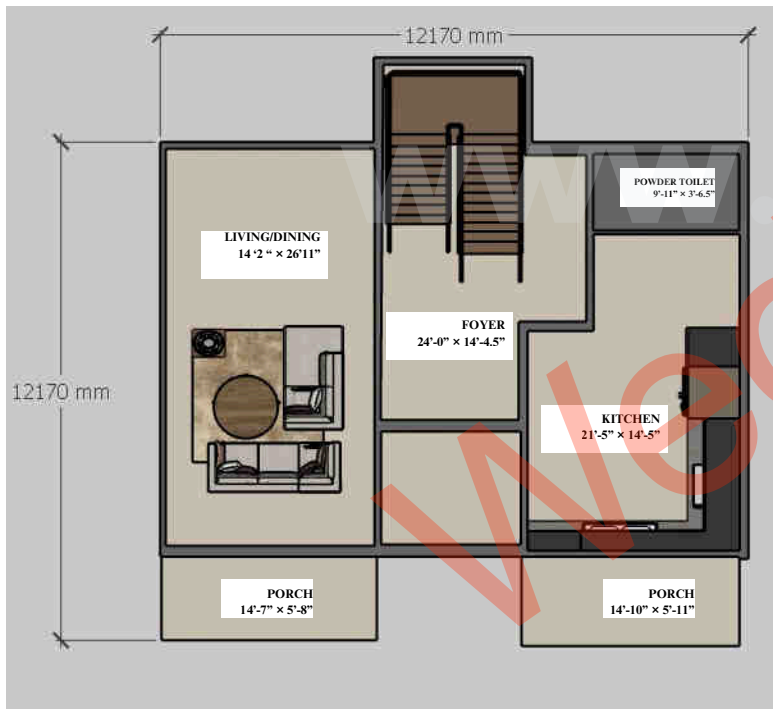


Double Storey House

Liora

G+1

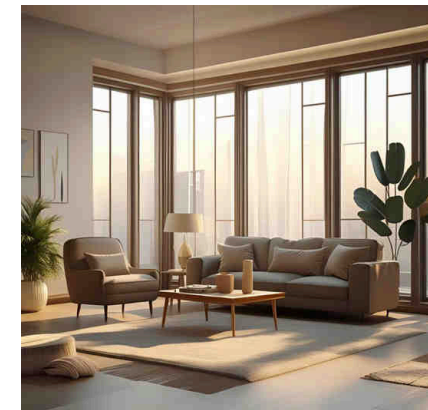
1593sqft (3bhk)



Ground floor plan



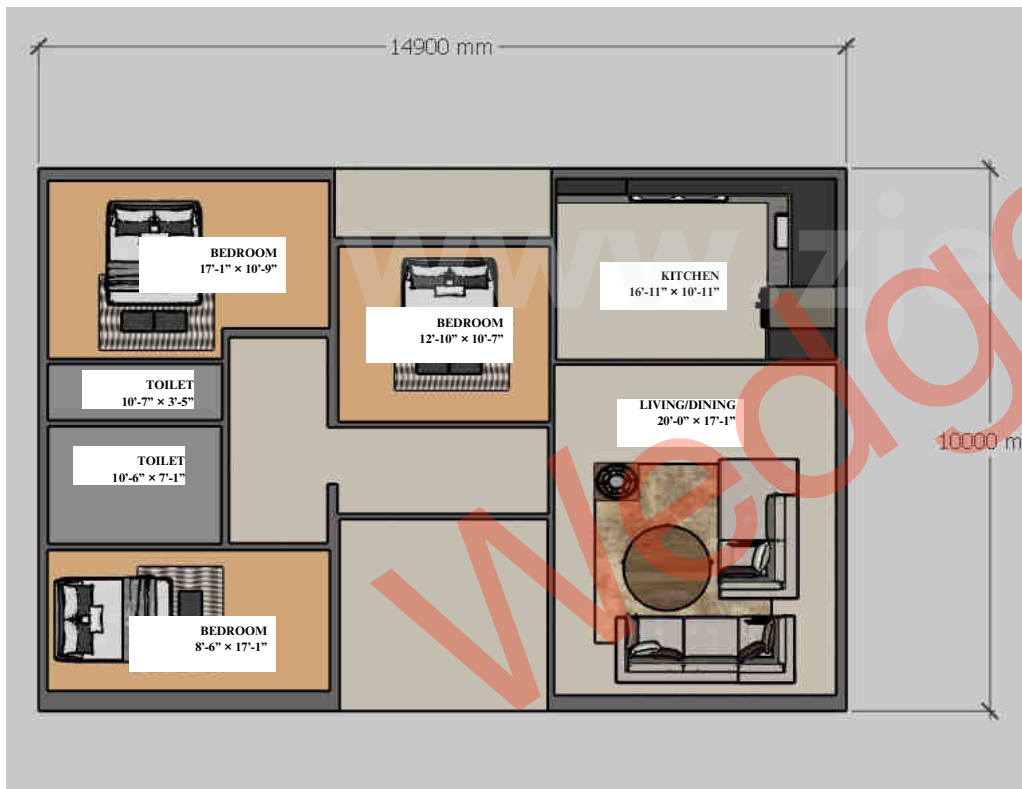
First floor plan





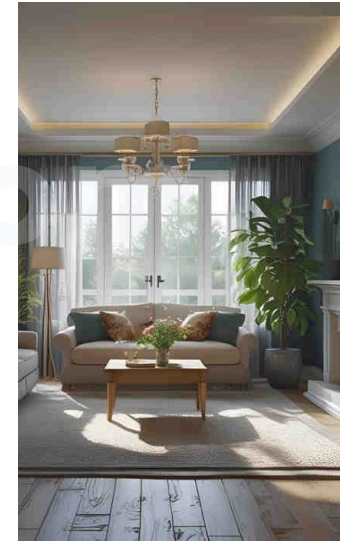
Single Storey House

Elara



G

1604sqft (3bhk)



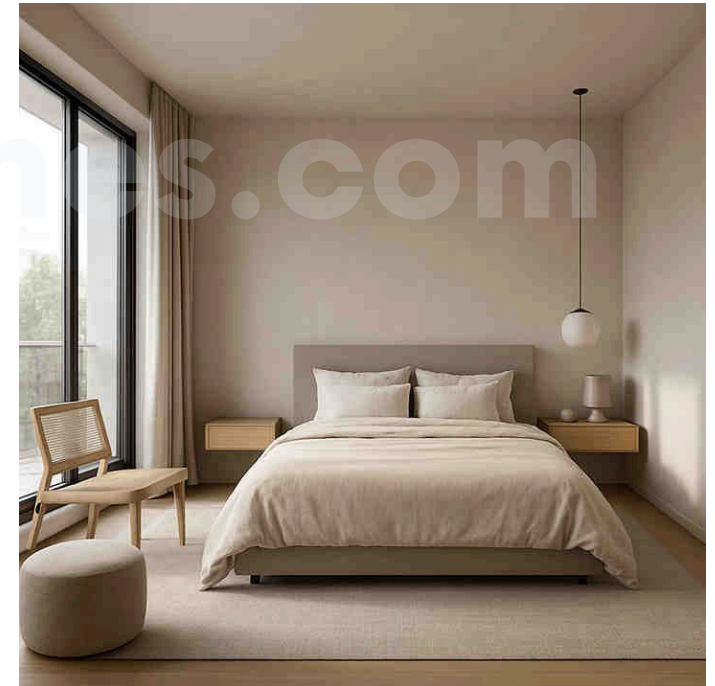


Single Storey House

Homixa

G

1800 (3bhk)



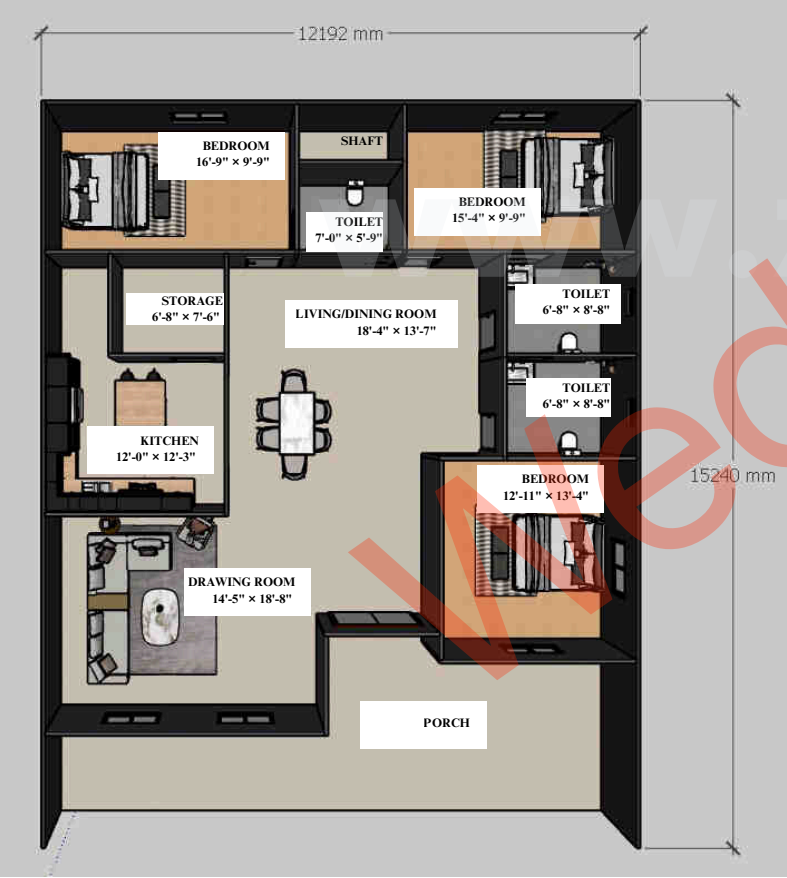


Single Storey House

Homora

G

2000sqft (3bhk)



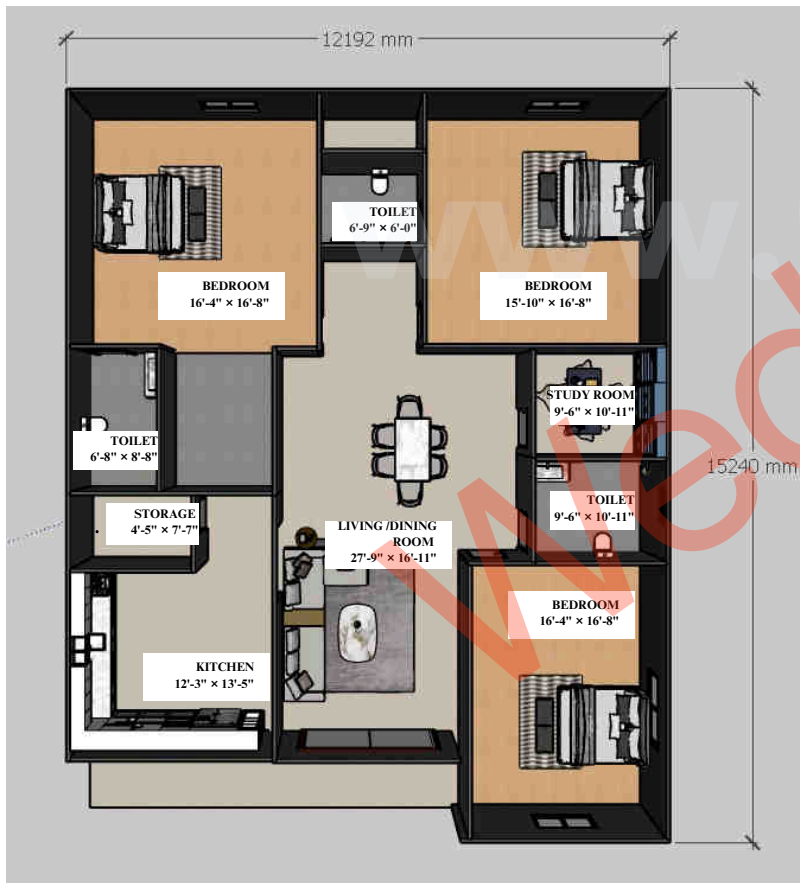


Single Storey House

Casario

G

2000sqft (3bhk)



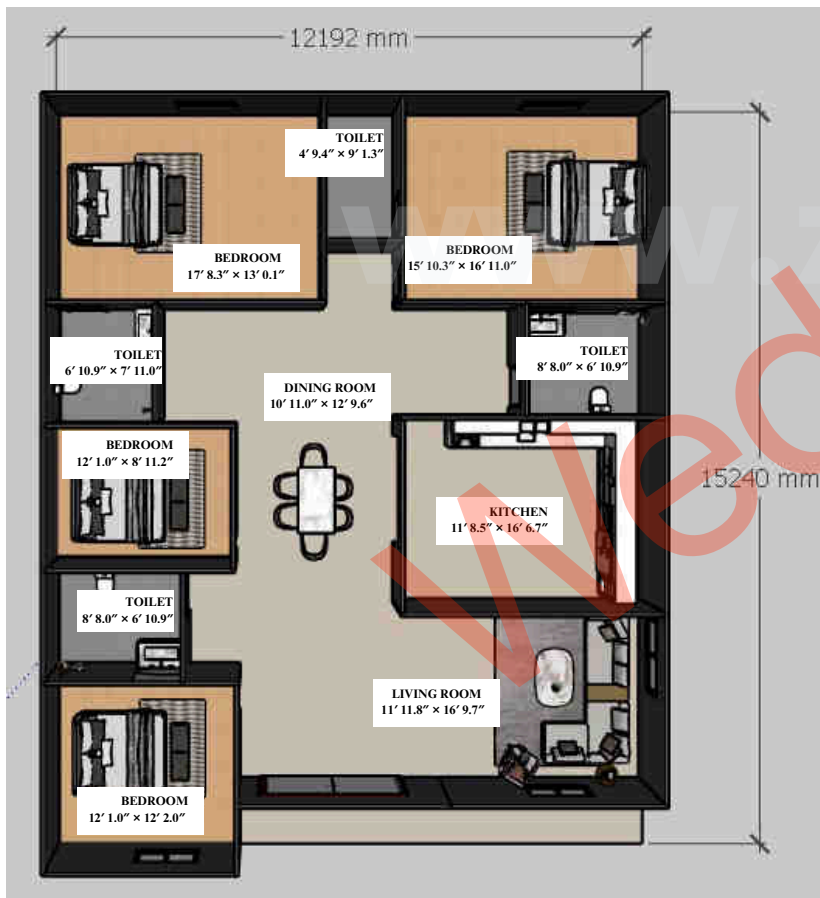


Single Storey House

OpalHaus

G

2000sqft (4bhk)

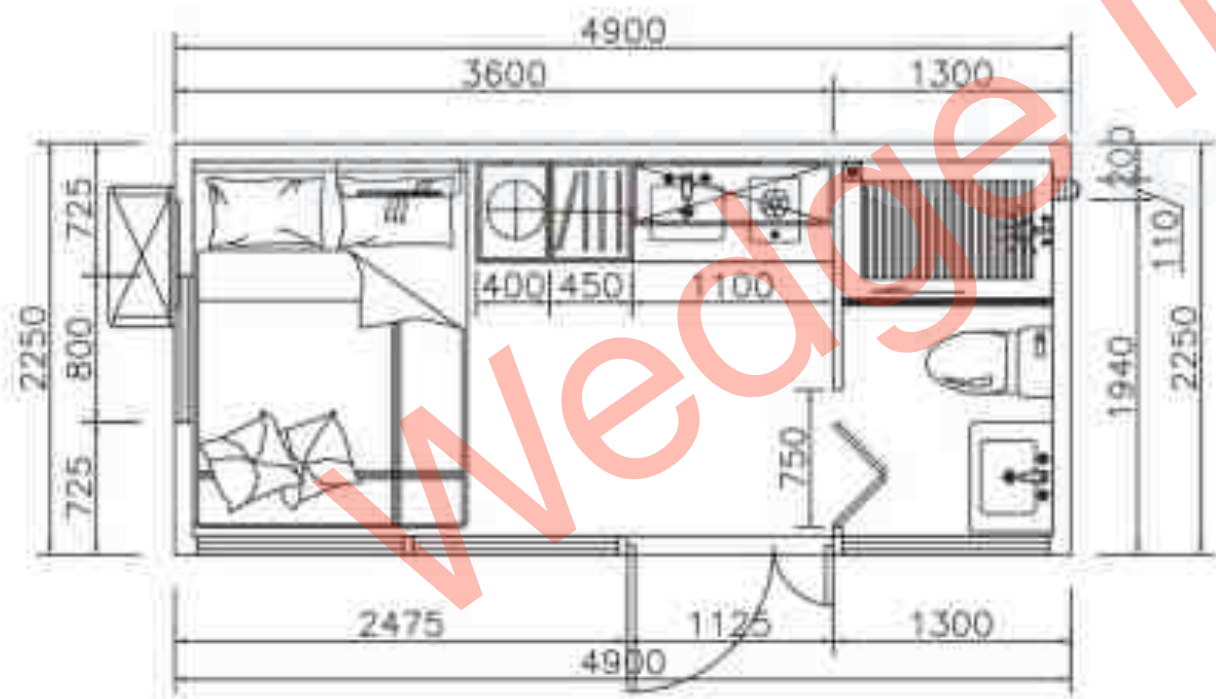




ZyraPod

G

1bhk



Size - 5.8 m x 2.25 m x 2.4 m



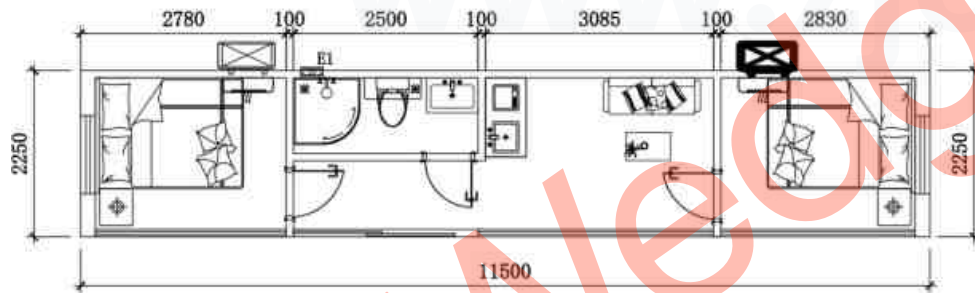


Cabin

Modulyn

G

2bhk



Size -11.5m x 2.25 m x 2.45 m



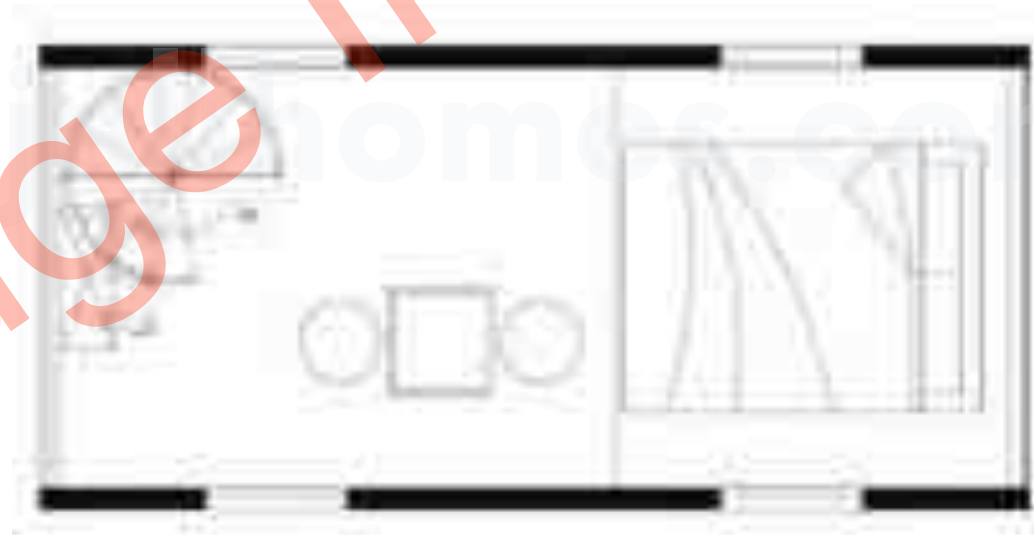
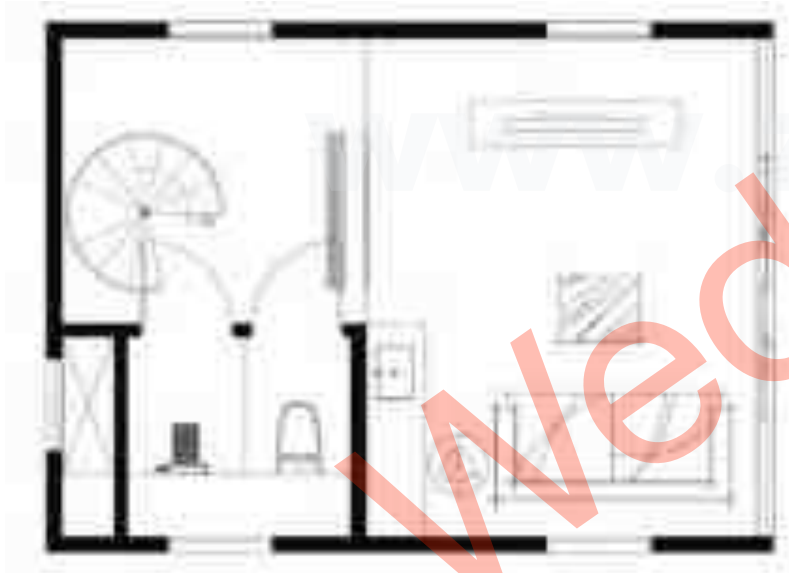


Triangle House

Oryn

G

1bhk



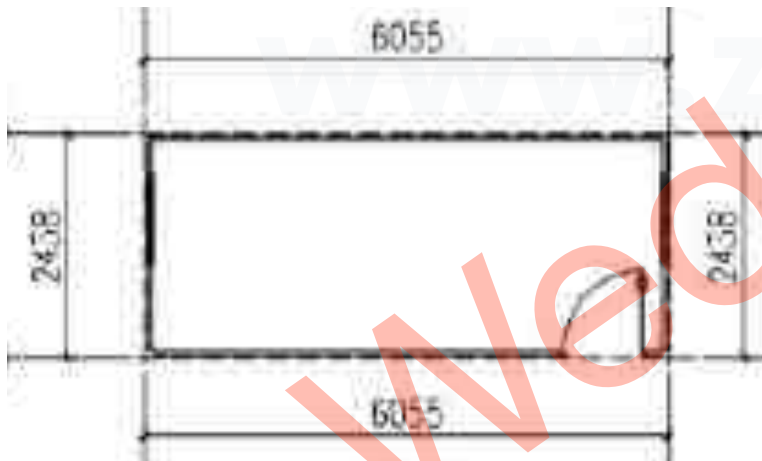


Flat Pack Container House

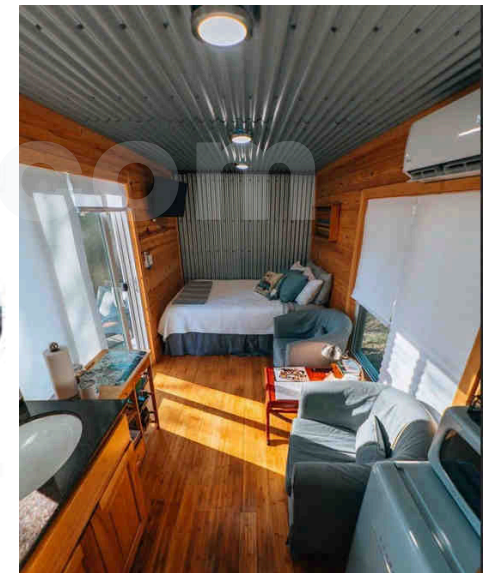
Prime

G

1bhk



Size - 2.435 m x 6.055 m x 2.896 m



Expandable Container House

CargoCasa

G

1bhk



Size - 5.9 m x 6.3 m x 2.48 m



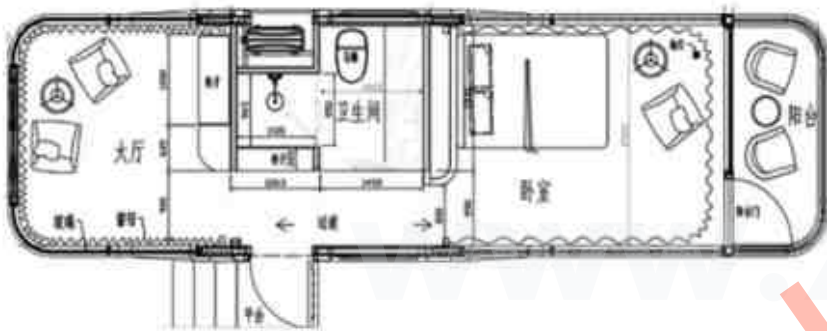


Space Capsule

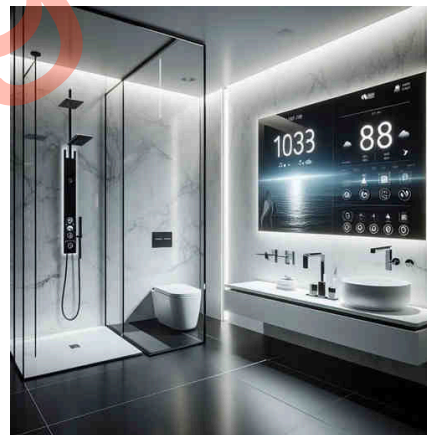
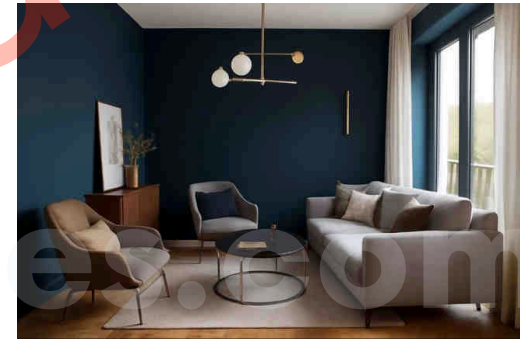
Orbit

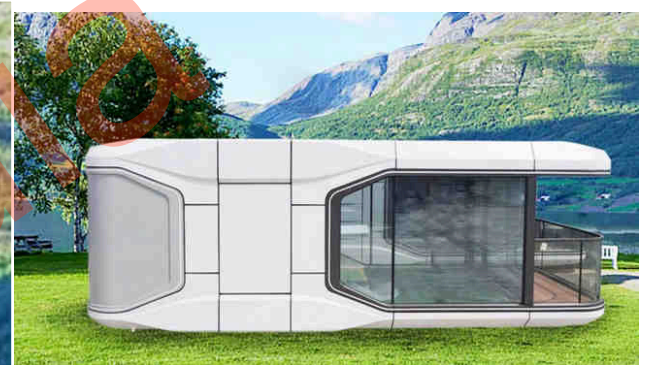
G

1bhk



Size - 11.5 M W:3.3M H:3.2 M



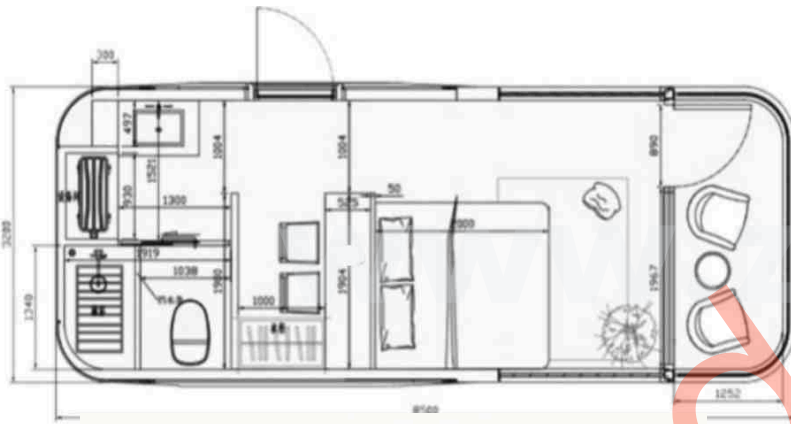


Space Capsule

PodCity

G

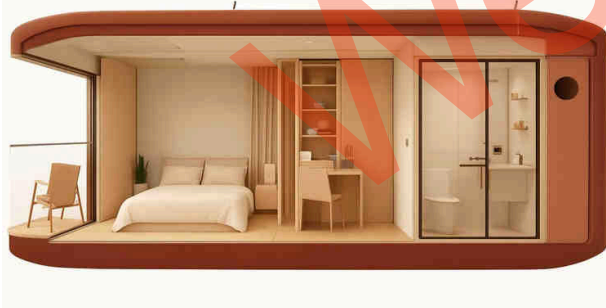
1bhk



Size - 8.5 M W:3.3M H:3.2 M

bedroom

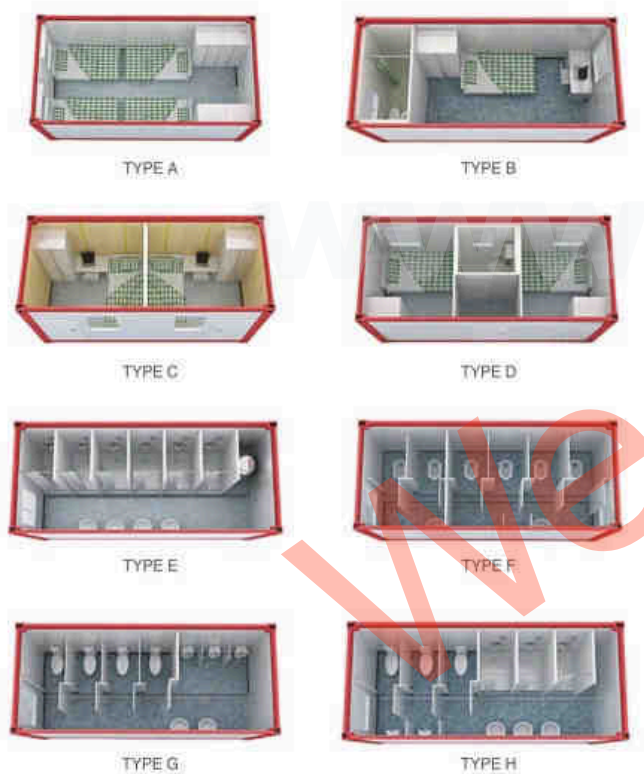
bathroom



Detachable Container House

PortaBox

G



Size - : 3MX 6MX 2.8M



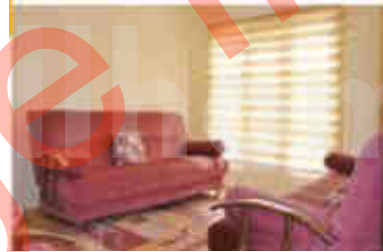
Sample Ready Made homes

Single Storey Prefab House



Doubledeck Prefab House





Some of the houses that we have constructed throughout Turnkey

Single Prefab House



Some of the houses that we have constructed throughout Turnkey

Double Prefab House



Prefabricated Houses



With 27 years of experience and exports to about 80 countries, we have completed the world's largest prefab project produced in one time, in the capital of Iraq, Baghdad and the city of Kut. The Project in Iraq, which included 1884 residential units and 16.148 m² of social facilities that covers a total built area of 174.148 m², is considered the world's biggest prefab project to be completed at one time. Beside the houses that were constructed within the scope of the project, we have also constructed a whole complex of social facilities buildings including town hall, school, hospital, shopping center, local government, and the fire detachment.

We have completed the ONKO-DAY rehabilitation center Project that consists of 12 prefabricated residence and 1 administrative building in Bursa, Nilüfer district



Airport Construction Sites



ZJELL has constructed the worksite buildings for Istanbul 3d Airport, which will be upon its completion, the world's biggest airport with capacity of 150 million passengers per year.

Shah Deniz 2 Project



We have completed work sites for the Sahdeniz 2 Project which will supply natural gas to whole Europe. ZJELL have constructed work site buildings for the Project Shahdeniz 2 which has the world's largest natural gas reserves in Azerbaijan near Baku. When the Project is completed, it will supply natural gas from Azerbaijan to Europe via Turkey.

Prefabricated Houses



Technical Specifications Of Pre-Manufactured Prefabricated Buildings

We produce our prefabricated buildings according to 75 kg/m² snow load, 80km/h wind speed, 1st degree earthquake conditions and on basis of 3rd climate zone.

Exterior And Interior Wall Panels

Interior and exterior wall panels are made of double sided cemented chipboard panels (cement board) with 8x1250x2500 mm dimensions (concrete slab). For insulation, between the door panels it used 84mm 12 density polystyrene rigid foam. Exterior wall thickness (panel) is 10 cm. Interior wall thickness (panel) is 6 cm. Optionally: for internal panels, it can be produced 10 cm of thickness, 2.8 m or 3 m of length and for exterior wall cladding Stone and wood patterned can be used. Steel framed system are manufactured with seamless threaded system technology.

Wall Joints

As joining elements special U and H galvanized steel profiles are used that are bent and combined by means of special connection system. Sweating that occurs on edges will not result in rust because of the curved shape. As an option additional cement board may be applied in order to create better isolation

Doors

External doors are made of steel with dimensions 90x200. Interior doors frames are made of stainless galvanized steel sheet with off-white color, and built in first class locks are used with TSE certified. Aluminium and PVC doors are offered as an option.

Transom windows and window

Windows are made of 100x120 cm and transoms are made of 60x40 PVC based materials with double glass with 4+9+4 for Windows and single glass of transoms. Optionally they can be produced in different dimensions.

Carrier Constructions

Roof trusses, beams and columns are made of special shaped galvanized steel sheets. Along the building every 125 cm a special shaped steel truss is placed and on top of truss a special shaped galvanized steel purlin is mounted. Roof trusses are made of C and U profiles and are made of galvanized sheet. Production is being done in our modern production facilities with seamless and bold connection system and Roll form machine

Roof Coatings and Insulation

For ceiling covering 12 mm thickness gypsum boards are used. For ceiling insulation above the ceiling gypsum board 80 mm thickness glass wool is laid. Optionally 160mm glass wool can be used. Below the combining roof trusses, omega profiles that are made of galvanized steel are fastened. Rust will not occur as result of sweating that occurs on steel sheet edges because the curved shape. PVC cover is used on ceiling Omega profiles to give them aesthetical look. Gypsum boards joining elements are made of electrostatic painted aluminium material. For wet places cement board is used for ceiling covering.

Roofing and Insulation

Over the metal purlin, painted trapezoidal steel sheets are placed as roof covering. Gable end covering is PVC paneling. Overhangs are 20 cm. Wide galvanized steel sheet shaped fringes with vents are used. For the roof special shaped galvanized steel sheet in diagonal shape are being used. PVC made square shape rain gutters and cylindrical downspouts with mounted accessories are used. (cracks resulting from snow are not covered).

Interior Cladding (Optional)

Claddings are optional and can be used in order to have aesthetic view on interior walls and also for insulation. For dry interior areas white gypsum boards and for wet interiors areas green gypsum boards can be used.

Exterior Cladding (Optional)

Exterior cladding is optional. After completing the exterior wall montage, 12 mm of Stone pattern cement boards can be applied on mounted galvanized omegas. This pattern has 410 mm of wideness and 20mm gap. Wooden pattern cladding is with siding covering.

Paints

Metal parts external side is painted with double layer of priming, and then double layer of synthetic oil paint. External side of wall panel is painted with acrylic paint. Mastic is being applied to exterior wall connections. First class TSE certified paint is used in all our buildings.

Electrical Installation

For electrical installation first class, TSE certified cables are used and laid over-plaster. Switches and sockets are chosen from first class TSE certified products. The installation can be made as flush mount optionally.

Sanitary Installation

TSE certified PVC pipes are used for sanitary installation of fresh and waste in surface mounted style. Sanitary ware and shower, sink, closet space TSE certified products are used. Clean water and sewage pipes are left 1 meter out of the building.

The Mezzanine Construction

The mezzanine construction carrier frame is made of special shaped galvanized steel sheets. The mezzanine floor is covered with 16mm cement board (cement-bonded particle board). On the ground floor suspended ceiling an 80 mm thickness layer of glass wool is placed for sound and heat insulation. The mezzanine load is 200 kg/m² and live load capacity is 150kg/m².

Stairs

Special shaped steel profiles are used to make the steel frame in box shape covered with 16 mm thickness cement board (cement-bonded particle board). Stair railing is made of box profiles. Stair's metal parts are painted with two layers of lining and two layers of oil paint.

Some extras that are not included in our price

- a) a) All the necessary plans for the installation, such as project, legal permits (Municipality etc.) and provide the appropriate legal environment for installation.
- b) Except all the mentioned work which are duty of contractor as agreed in the contract are responsibility of the customer.
- c) The surface that the house will be placed should be flat (the concrete base must be according to the plans). Also all kinds of excavation and landscaping, making all kinds of insulation between the concrete floor of the building works.
Apply a layer of alum after the basic construction is completed (The alum applied on external side should be inclining, and from inside the alum should be 2 cm higher than the outside layer).
- e) Cladding of floor and wet zone areas (ceramic, PVC, parquet and marble. Before coat the tiles green drywall should be covered, wires should be drawn on the tiles after application must be made) f) External connections of the product (electrical, sewage, clean water, etc.) making materials and workmanship.
- g) Electricity which will be used during the installation, scaffolding supply and installation if necessary
- h) To pay supervisors travel, accommodation and food expenses.
- i) Clean water supply and pressure equipment, vent installation materials and labor are the main link entries
- i) Securing the goods against stealing, keeping the products inside closed area in order to protect them against deformation and direct contact with water. The materials should not be stacked up if the customer stock them outside.
- j) Telephone, computer and UPS installations, materials, and labor Electrical main distribution board (meter, cutout box, main fuse...etc.) and the grounding. Heating and cooling systems (radiators, boilers, water heaters, air conditioning, etc), water meter and installation of sanitary equipment Supply and montage of materials materials such such as balcony balcony and patio railings, kitchen cabinets, bathroom cabinets, mirrors, soap holder, paper holder
- o) In case when the loading car cannot approach the assembling area, loading the materials to another vehicle, moving them to the assembling area and unloading them
- p) The removal of garbage and waste material after installation
- r) Transportation and transportation insurance, unload the container on the vehicle on work site

“Designing sustainable homes for better tomorrow”



info@wedge-india.com



Wedge

INFORMATION

+919315242072

www.zjellhomes.com

615, Floor 6 Galleria Tower,
DLF Phase 4 Gurugram,
Haryana - 1220025

